

PARTS LIST

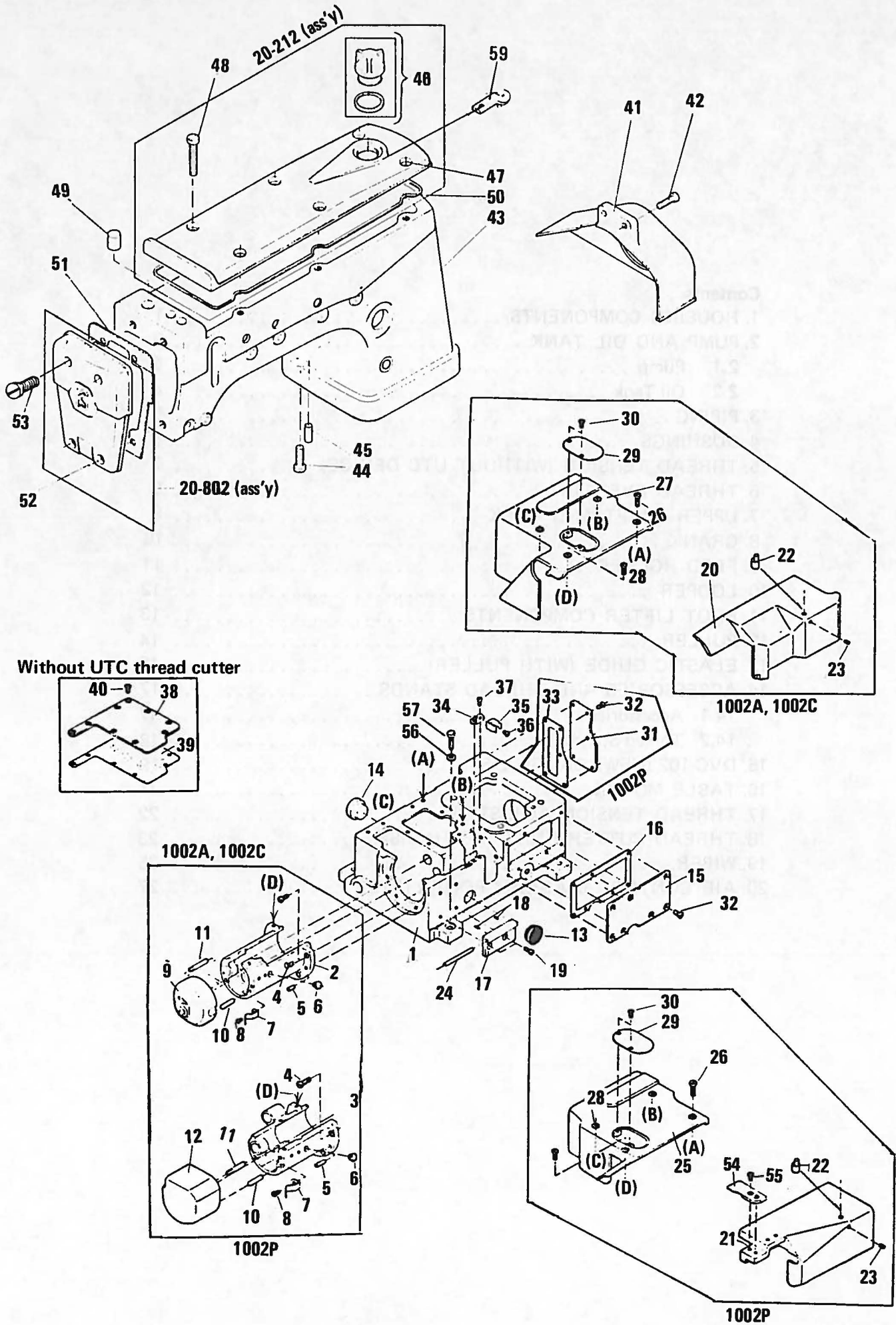
M-1000 series

1002A
1002C
1002P

Contents

1. HOUSING COMPONENTS	1
2. PUMP AND OIL TANK	3
2.1 Pump	3
2.2 Oil Tank	4
3. PIPING	5
4. BUSHINGS	6
5. THREAD TENSION (WITHOUT UTC DEVICE)	7
6. THREAD EYELETS	8
7. UPPER SHAFT AND TANK	9
8. CRANK	10
9. FEED ROCKER	11
10. LOOPER	12
11. FOOT LIFTER COMPONENTS	13
12. PULLER	14
13. ELASTIC GUIDE (WITH PULLER)	15
14. ACCESSORIES AND THREAD STANDS	17
14.1 Accessories	17
14.2 Thread Stands	18
15. DVC-102 (NEW) GAUGE LIST	19
16. TABLE MOTOR	21
17. THREAD TENSION ADJUSTER	22
18. THREAD CUTTER KNIFE MECHANISM	23
19. WIPER	25
20. AIR CONTROL DIAGRAM FOOT LIFTER	27

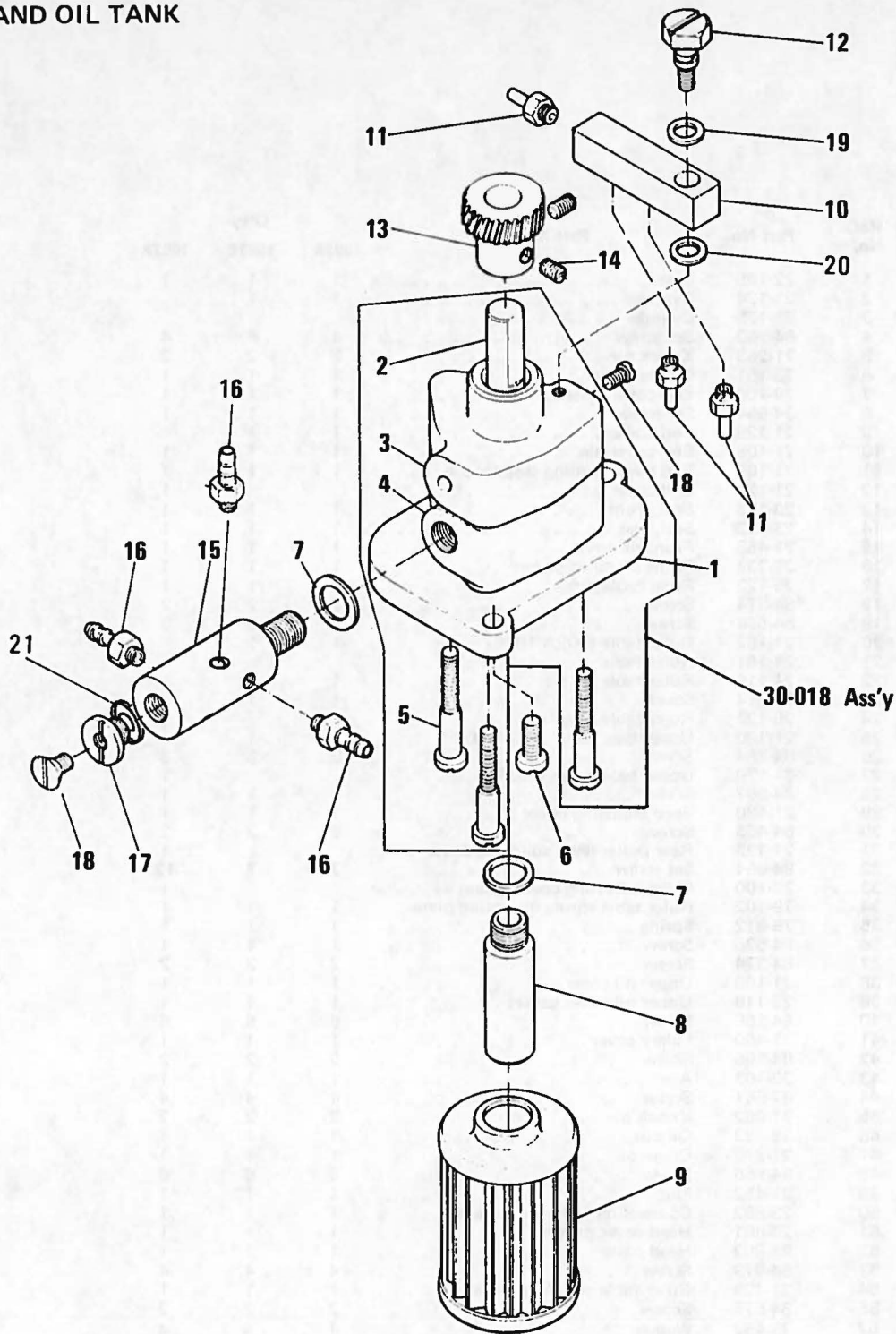
1 HOUSING COMPONENTS



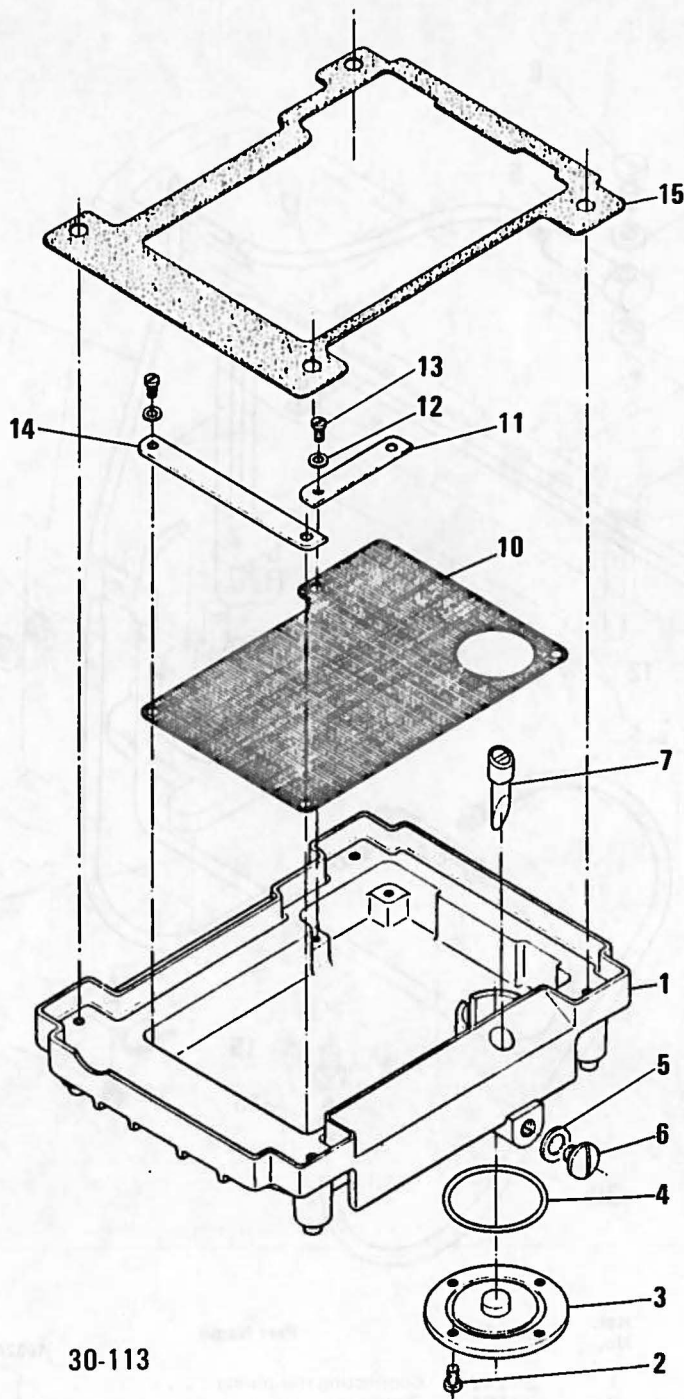
Ref. No.	Part No.	Part Name	Q'ty		
			1002A	1002C	1002P
1	22-105	Base	1	1	1
2	21-124	Cylinder	1	1	
3	21-125	Cylinder			
4	84-762	Set screw	4	4	4
5	71-263	Knock pin	2	2	2
6	23-151	Oil seal cover	1	1	1
7	79-100	End cover plate spring	1	1	1
8	84-564	Set screw	1	1	1
9	21-128	End cover	1	1	
10	71-108	End cover pin	1	1	1
11	71-109	End cover turning stopper pin	1	1	1
12	21-127	End cover			1
13	23-153	Seal, front	1	1	1
14	23-152	Seal, rear	1	1	1
15	21-453	Front oil cover	1	1	1
16	23-233	Front oil cover gasket	1	1	1
17	25-122	Ruler table hinge	1	1	1
18	84-314	Screw	2	2	2
19	84-566	Screw	2	2	2
20	21-182	Ruler table (102A 102C)	1	1	
21	21-181	Ruler table			1
22	71-116	Ruler table set pin	1	1	1
23	84-314	Screw	1	1	1
24	25-123	Ruler table hinge pin	1	1	1
25	21-180	Upper base cover (102A 102P)	1	1	
26	84-764	Screw	3	3	3
27	21-179	Upper base cover (102P)			1
28	84-567	Screw	1	1	1
29	21-130	Feed adjusting cover	1	1	1
30	84-463	Screw	2	2	2
31	21-123	Rear puller lever adjusting cover			1
32	84-664	Set screw	7	7	12
33	23-100	Puller adjusting cover gasket			1
34	79-102	Ruler table spring mounting plate	1	1	1
35	79-912	Spring	1	1	1
36	84-575	Screw	1	1	1
37	84-374	Screw	2	2	2
38	21-186	Upper oil cover	1	1	1
39	23-110	Upper oil cover gasket	1	1	1
40	84-566	Screw	6	6	6
41	21-400	Pulley cover	1	1	1
42	84-566	Screw	2	2	2
43	22-103	Arm	1	1	1
44	87-661	Screw	4	4	4
45	71-262	Knock pin	2	2	2
46	39-233	Oil pot	1	1	1
47	21-212	Crank oil	1	1	1
48	84-566	Screw	6	6	6
49	21-452	Plug	1	1	1
50	23-802	Connecting rod cover gasket	1	1	1
51	23-801	Head cover gasket	1	1	1
52	21-802	Head cover	1	1	1
53	84-579	Screw	4	4	4
54	21-129	Ruler table auxiliary cover	1	1	1
55	84-575	Screw	2	2	2
57	75-452	Washer	4	4	4
58	85-628	Screw	4	4	4
59	39-137	Pipe supprt	1	1	1

2 PUMP AND OIL TANK

2-1 Pump



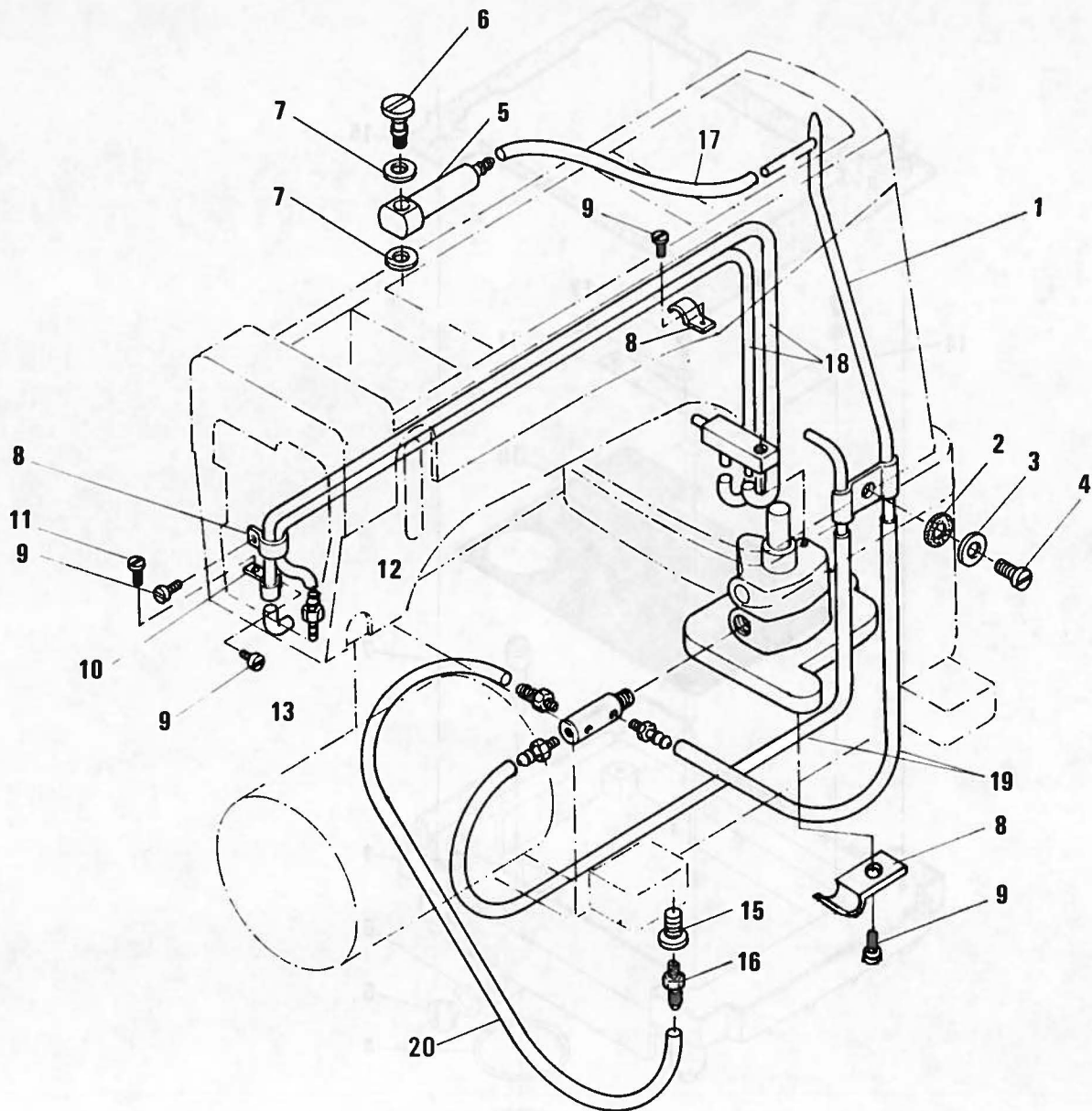
Ref. No.	Part No.	Part Name	Q'ty		
			1002A	1002C	1002P
1	31-103	Pump mounting rear plate	1	1	1
2	31-104	Shaft	1	1	1
3	31-106	Pump housing (2)	1	1	1
4	31-105	Pump housing (1)	1	1	1
5	84-102	Mounting reamer bolt	3	3	3
6	84-752	Screw	2	2	2
7	23-164	Gasket	2	2	2
8	35-104	Filter inlet	1	1	1
9	31-222	Oil filter	1	1	1
10	35-105	Return separator	1	1	1
11	31-364	Joint E	2	2	2
12	35-832	Joint screw	1	1	1
13	31-409	Worm gear	1	1	1
14	84-521	Screw	2	2	2
15	31-248	Oil tube joint	1	1	1
16	31-314	Pipe joint	3	3	3
17	85-527	Seal screw	1	1	1
18	84-661	Screw	2	2	2
19	23-306	Gasket	2	2	2
20	23-292	Gasket	1	1	1
21	23-188	Gasket	1	1	1



30-113

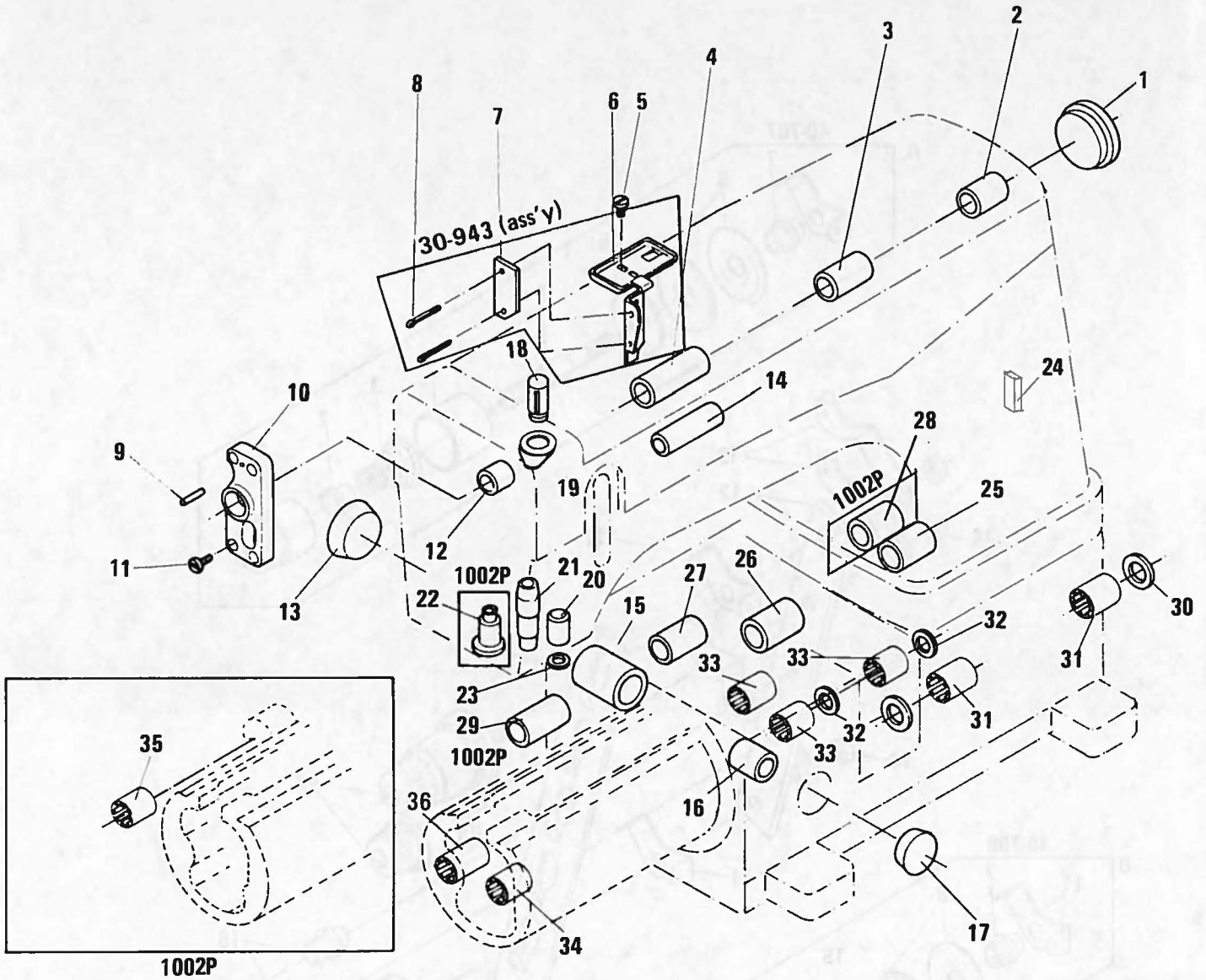
Ref. No.	Part No.	Part Name	Q'ty		
			1002A	1002C	1002P
1	31-107	Oil tank	1	1	1
2	84-566	Screw	3	3	3
3	35-103	Oil filter holder	1	1	1
4	23-103	O-ring	1	1	1
5	23-304	Gasket	1	1	1
6	87-311	Screw	1	1	1
7	39-317	Oil gauge	1	1	1
8	75-452	Washer	4	4	4
9	85-628	Screw	4	4	4
10	23-105	Oil reser voir mesh	1	1	1
11	23-109	Mesh clamp plate	1	1	1
12	75-467	Washer	4	4	4
13	84-564	Screw	4	4	4
14	23-108	Mesh clamp plate A	1	1	1
15	23-104	Gasket	1	1	1

3 PIPING



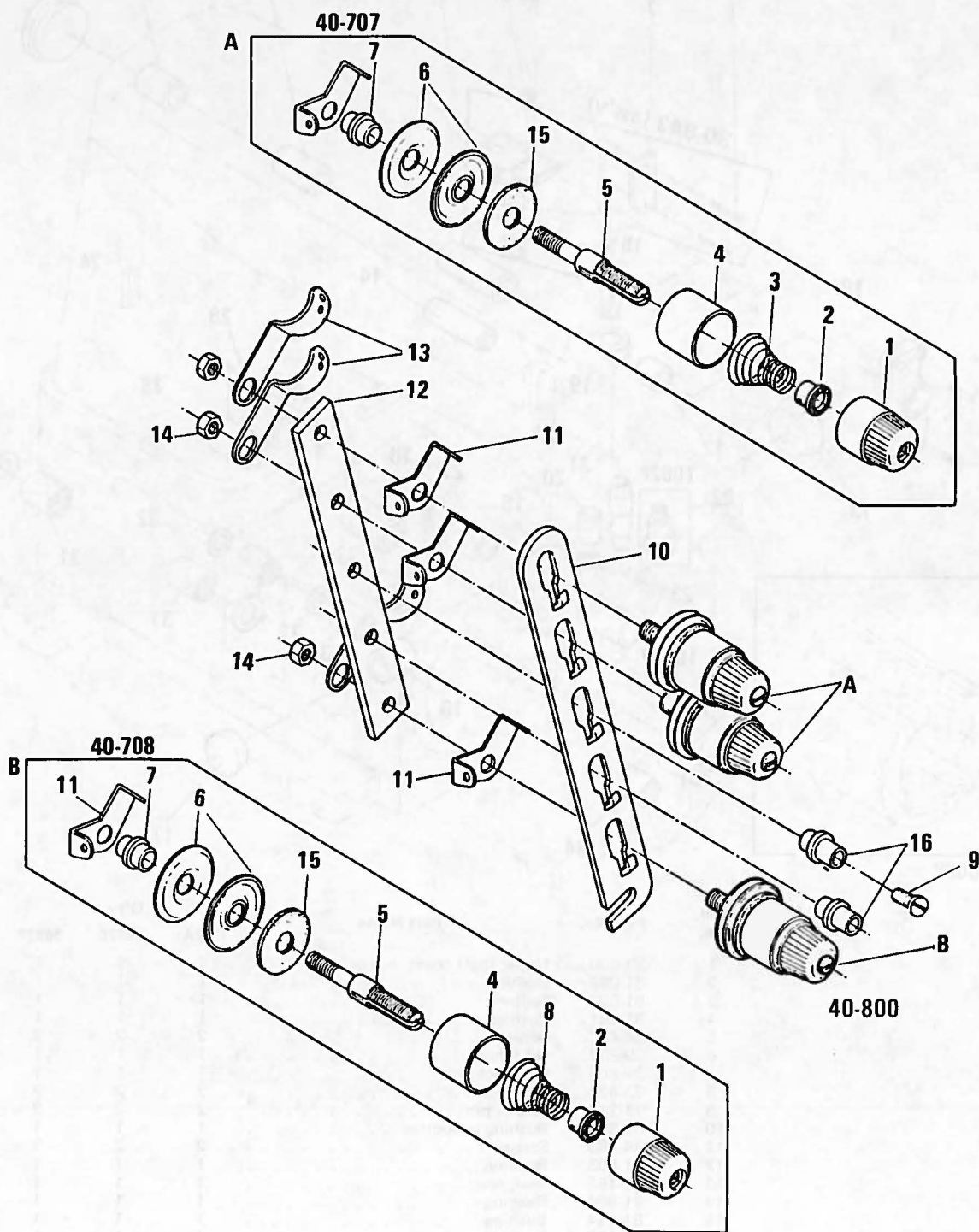
Ref. No.	Part No.	Part Name	Q'ty		
			1002A	1002C	1002P
1	35-247	Connecting rod piping	1	1	1
2	23-291	Gasket	1	1	1
3	75-468	Washer	1	1	1
4	84-363	Screw	1	1	1
5	35-831	Upper shaft piping joint	1	1	1
6	35-832	Upper shaft piping screw	1	1	1
7	23-306	Seal	2	2	2
8	39-133	Mounting bracket E	3	3	3
9	84-361	Screw	4	4	4
10	35-161	Mounting bracket Aa	1	1	1
11	84-564	Screw	1	1	1
12	31-364	Pipe joint	1	1	1
13	35-829	Oil back pipe	1	1	1
15	85-531	Screw	1	1	1
16	31-314	Pipe joint	1	1	1
17	35-307	Tube 180 l	1	1	1
18	35-322	" 630 l	2	2	2
19	35-303	" 280 l	2	2	2
20	35-303	" 280 l	1	1	1

4 BUSHINGS



Ref. No.	Part No.	Part Name	Q'ty		
			1002A	1002C	1002P
1	23-800	Upper shaft cover	1	1	1
2	81-082	Bushing	1	1	1
3	81-082	Bushing	1	1	1
4	81-081	Bushing	1	1	1
5	84-462	Screw	2	2	2
6	39-803	Oil fence	1	1	1
7	39-804	Oil fence	1	1	1
8	93-622	Split pin	2	2	2
9	71-216	Knock pin	2	2	2
10	69-803	Bushing supporter	1	1	1
11	84-763	Screw	2	2	2
12	81-803	Bushing	1	1	1
13	23-152	Seal, rear	1	1	1
14	81-804	Bushing	1	1	1
15	81-144	Bushing	1	1	1
16	81-136	Bushing	1	1	1
17	23-153	Seal, front	1	1	1
18	81-206	Bushing	1	1	1
19	39-801	Oil fence	1	1	1
20	81-209	Bushing	1	1	1
21	81-163	Bushing	1	1	1
22	81-194	Bushing			1
23	94-231	Oil seal	1	1	1
24	23-383	Felt	1	1	1
25	81-110	Bushing	1	1	1
26	81-807	Bushing	1	1	1
27	81-123	Bushing	1	1	1
28	81-193	Bushing			1
29	81-736	Bushing			1
30	94-101	Seal	2	2	2
31	91-102	Needle bearing	2	2	2
32	94-102	Seal	2	2	2
33	91-103	Needle bearing	3	3	3
34	93-705	Needle bearing	1	1	1
35	81-103	Needle bearing			1
36	91-104		1	1	1

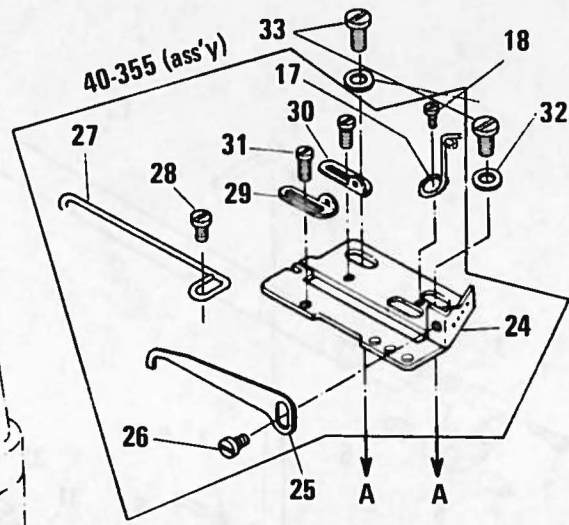
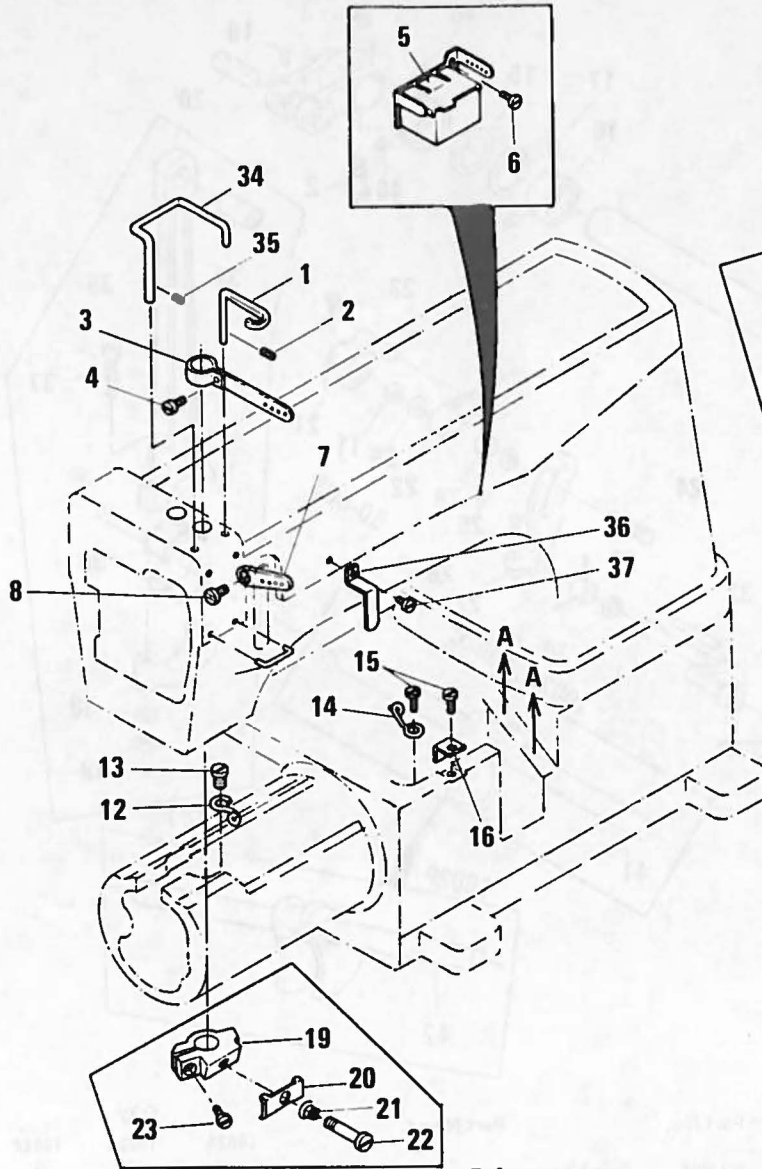
5 THREAD TENSION (WITHOUT UTC DEVICE)



Ref. No.	Part No.	Part Name	Q'ty		
			1002A	1002C	1002P
1	41-101	Adjusting nut	3	3	3
2	41-105	Adjusting ratchet	3	3	3
3	41-701	Spring, strong	2	2	2
4	41-107	Disc cover	3	3	3
5	41-172	Tension post	3	3	3
6	41-111	Disc	6	6	6
7	41-131	Collar	3	3	3
8	41-702	Spring, weak	1	1	1
9	84-764	Screw	2	2	2
10	41-236	Tension post support	1	1	1
11	41-115	Thread eyelet	3	3	3
12	41-237	Tension post holder	1	1	1
13	41-117	Thread eyelet	3	3	3
14	86-411	Nut	3	3	3
15	23-324	Felt	3	3	3
16	41-132	Tension post collar	2	2	2

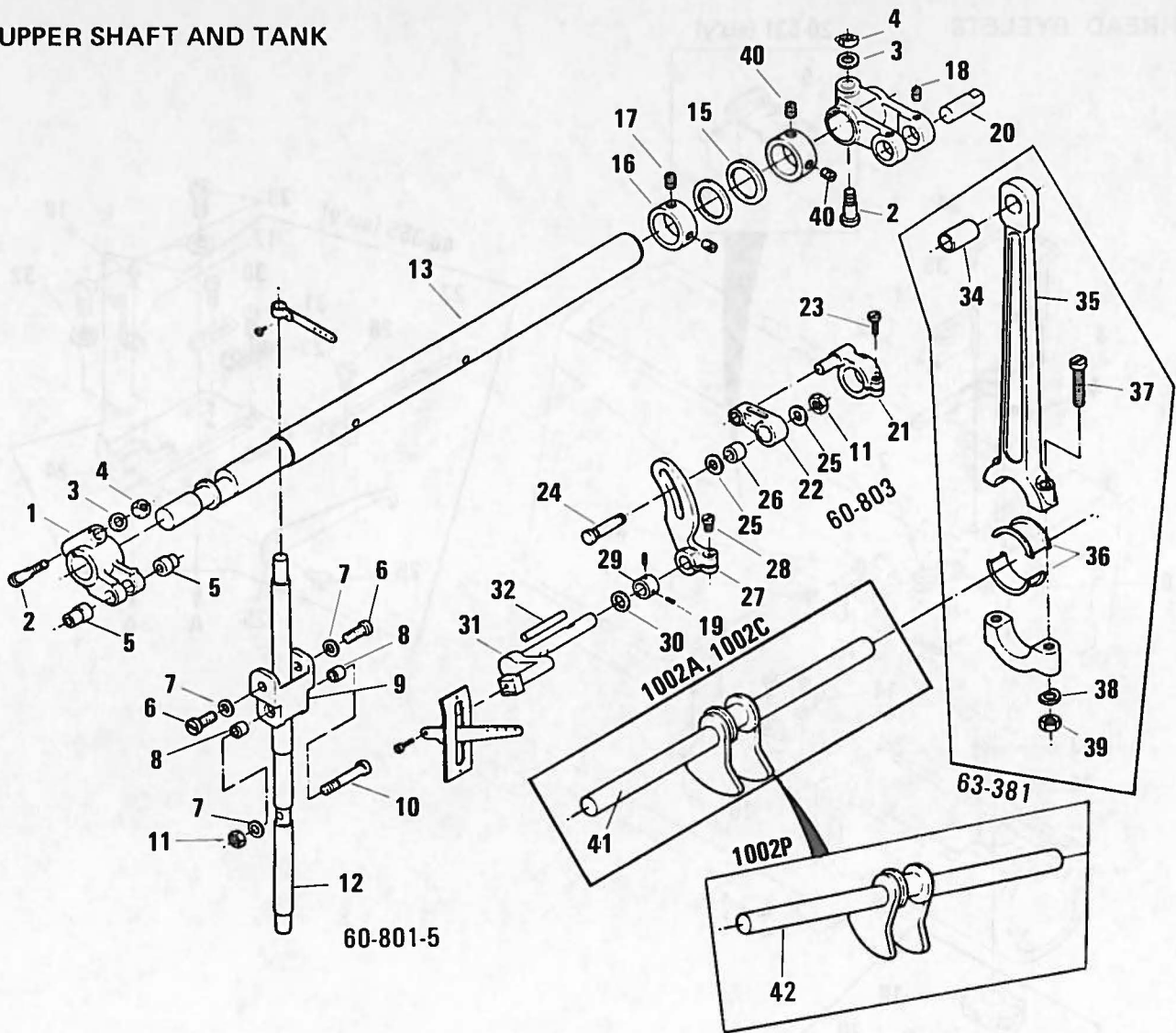
6 THREAD EYELETS

20-531 (ass'y)



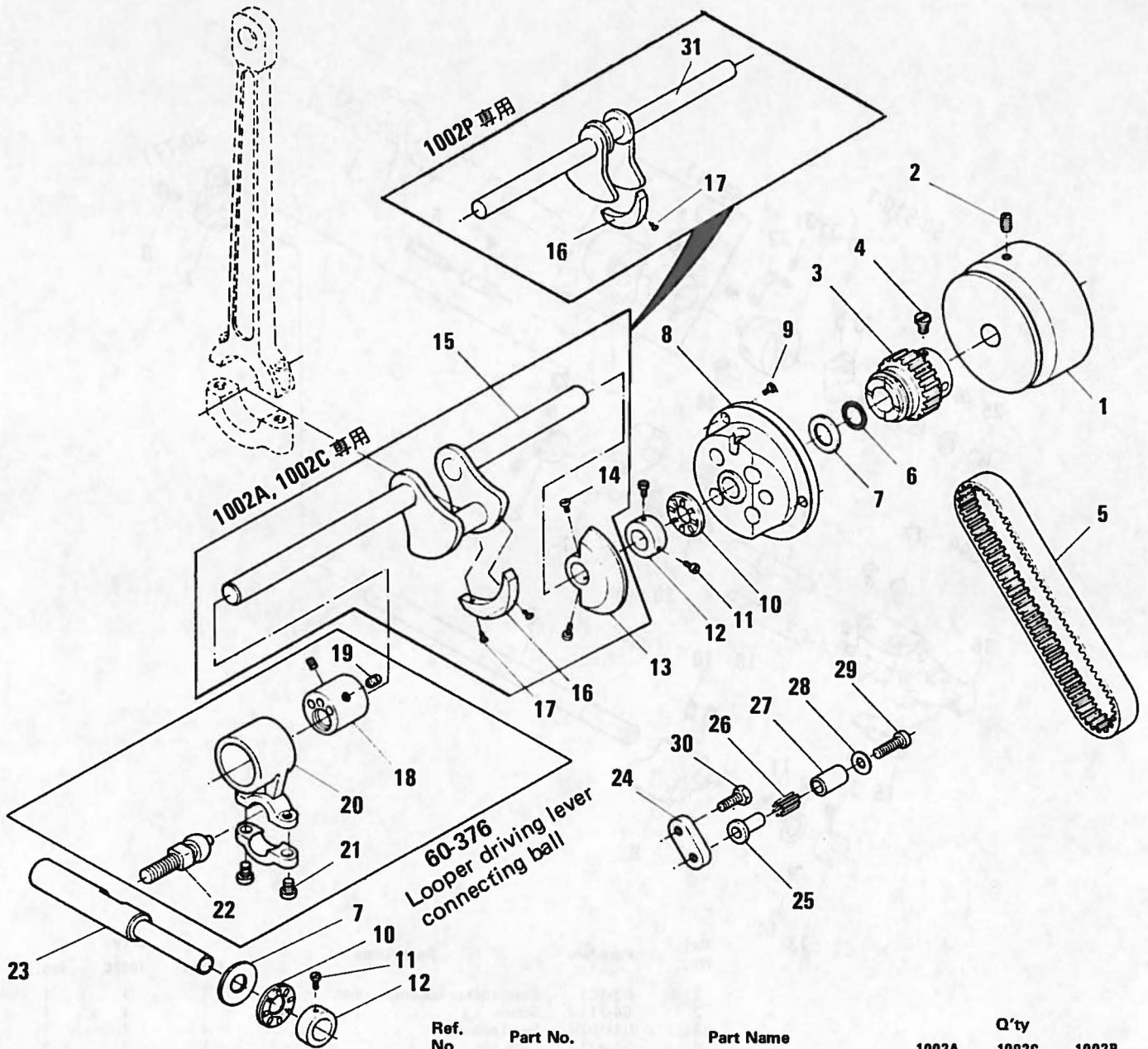
Ref. No.	Part No.	Part Name	Q'ty		
			1002A	1002C	1002P
1	45-251	Needle thread take-up bar	1	1	1
2	84-521	Screw	1	1	1
3	45-181	Needle bar thread eyelet	1	1	1
4	84-379	Screw	1	1	1
5	20-531	Silicon tank set	1	1	1
6	84-361	Screw	2	2	2
7	45-091	Thread eyelet	1	1	1
8	84-611	Screw	1	1	1
9	45-246	Guide pin	1	1	1
11	45-191	Thread eyelet	1	1	1
12	47-201	Looper thread eyelet	1	1	1
13	84-361	Screw	1	1	1
14	47-205	Looper thread eyelet	1	1	1
15	84-361	Screw	2	2	2
16	47-143	Looper thread eyelet guide	1	1	1
17	47-144	Looper thread eyelet	1	1	1
18	84-571	Screw	1	1	1
19	41-304	Tension nipper bracket	1	1	1
20	45-142	Tension nipper	1	1	1
21	41-722	Spring	1	1	1
22	84-171	Screw	1	1	1
23	84-413	Screw	1	1	1
24	43-343	Cast off support bracket	1	1	1
25	43-344	Looper thread retainer	1	1	1
26	84-374	Screw	1	1	1
27	43-338	Pin	1	1	1
28	84-163	Screw	1	1	1
29	47-131	Looper thread eyelet (left)	1	1	1
30	47-132	Looper thread eyelet (right)	1	1	1
31	84-163	Screw	2	2	2
32	75-455	Washer	2	2	2
33	84-571	Screw	2	2	2
34	21-703	Needle bar guide bar	1	1	1
35	84-521	Screw	1	1	1
36	21-712	Thread eyelet guide plate	1	1	1
37	84-571	Screw	1	1	1
38	71-166	Pin	1	1	1

7 UPPER SHAFT AND TANK



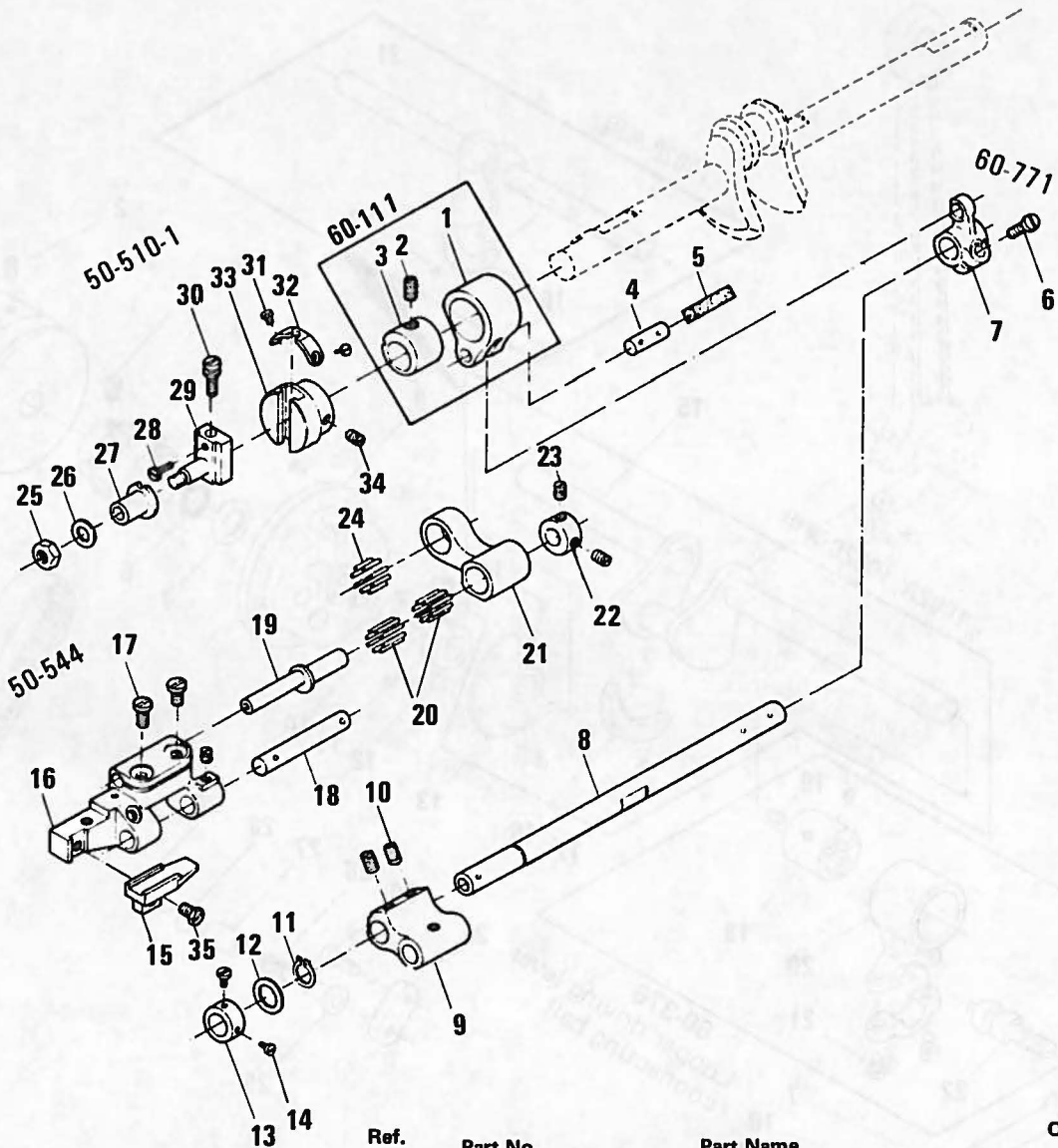
Ref. No.	Part No.	Part Name	Q'ty		
			1002A	1002C	1002P
1	67-801	Crank assembly			1
2	71-455	Threaded pin			2
3	75-381	Washer			2
4	86-501	Nut			2
5	71-501	Upper pin			2
6	84-362	Screw			2
7	75-522	Washer			4
8	75-249	Lever bush			2
9	66-802	Needle bar joint			1
10	84-617	Screw			1
11	86-311	Nut			2
12	11-804	Needle bar			1
13	71-693	Upper shaft C			1
14	67-802	Crank lever			1
15	75-306	Washer			2
16	75-106	Collar			2
17	85-213	Screw			1
18	67-802	Crank			1
19	84-521	Screw			4
20	71-506	Pin			1
21	67-803	Arm with screws			1
22	66-801	Thread tension regulating link			1
23	84-814	Screw			1
24	84-599	Screw			1
25	75-522	Washer			2
26	75-248	Roller			1
27	67-805	Thread tension regulating lever			1
28	84-814	Screw			2
29	75-152	Collar			1
30	75-366	Washer			1
31	69-801	Arm crank			1
32	23-398	Felt $\phi 4 \times 40\ell$			1
33					
34	81-802	Bush			1
35	63-381	Crank rod			1
36	81-801	Bush			1
37	84-617	Screw			2
38	75-388	Washer			2
39	86-316	Nut			2
40	85-113	Screw			3
41	71-106	Crank shaft			1
42	71-126	Crank shaft			1

8 CRANK



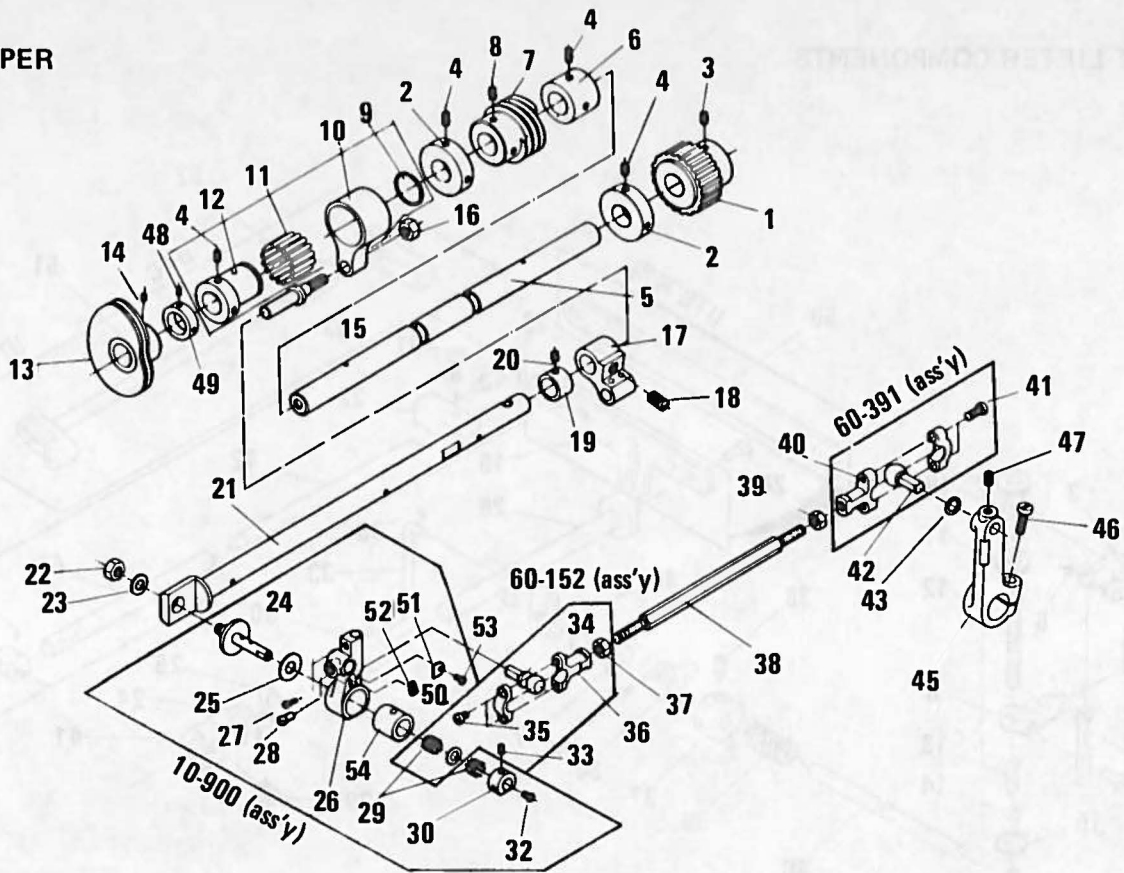
Ref. No.	Part No.	Part Name	Q'ty		
			1002A	1002C	1002P
1	06-111	Pulley	1	1	1
2	85-114	Screw	2	2	2
3	06-158	Timing pulley	1	1	1
4	84-718	Screw	2	2	2
5	58-101	Timing belt	1	1	1
6	23-197	O-ring	1	1	1
7	75-327	Thrust washer	2	2	2
8	69-305	Flange E	1	1	1
9	84-566	Screw	3	3	3
10	92-231	Thrust bearing	2	2	2
11	84-563	Screw	4	4	4
12	75-112	Thrust collar	2	2	2
13	69-149	Balance weight B	1	1	
14	84-579	Screw	2	2	
15	71-106	Crankshaft (1002A, 1002C)	1	1	1
16	69-148	Balance weight A	1	1	1
17	84-579	Screw	2	2	2
18	61-514	Looper drive eccentric	1	1	1
19	85-113	Screw	2	2	2
20	63-515	Looper driving lever connecting rod	1	1	1
21	84-567	Screw	2	2	2
22	61-713	Looper driving lever connecting ball	1	1	1
23	71-107	Looper driving shaft	1	1	1
24	25-303	Idle bracket	1	1	1
25	75-243	Collar	1	1	1
26	91-271	Bearing	1	1	1
27	75-201	Roller	1	1	1
28	75-384	Washer	1	1	1
29	84-765	Screw	1	1	1
30	84-814	Screw	1	1	1
31	71-126	Crankshaft	1	1	1

9 FEED ROCKER



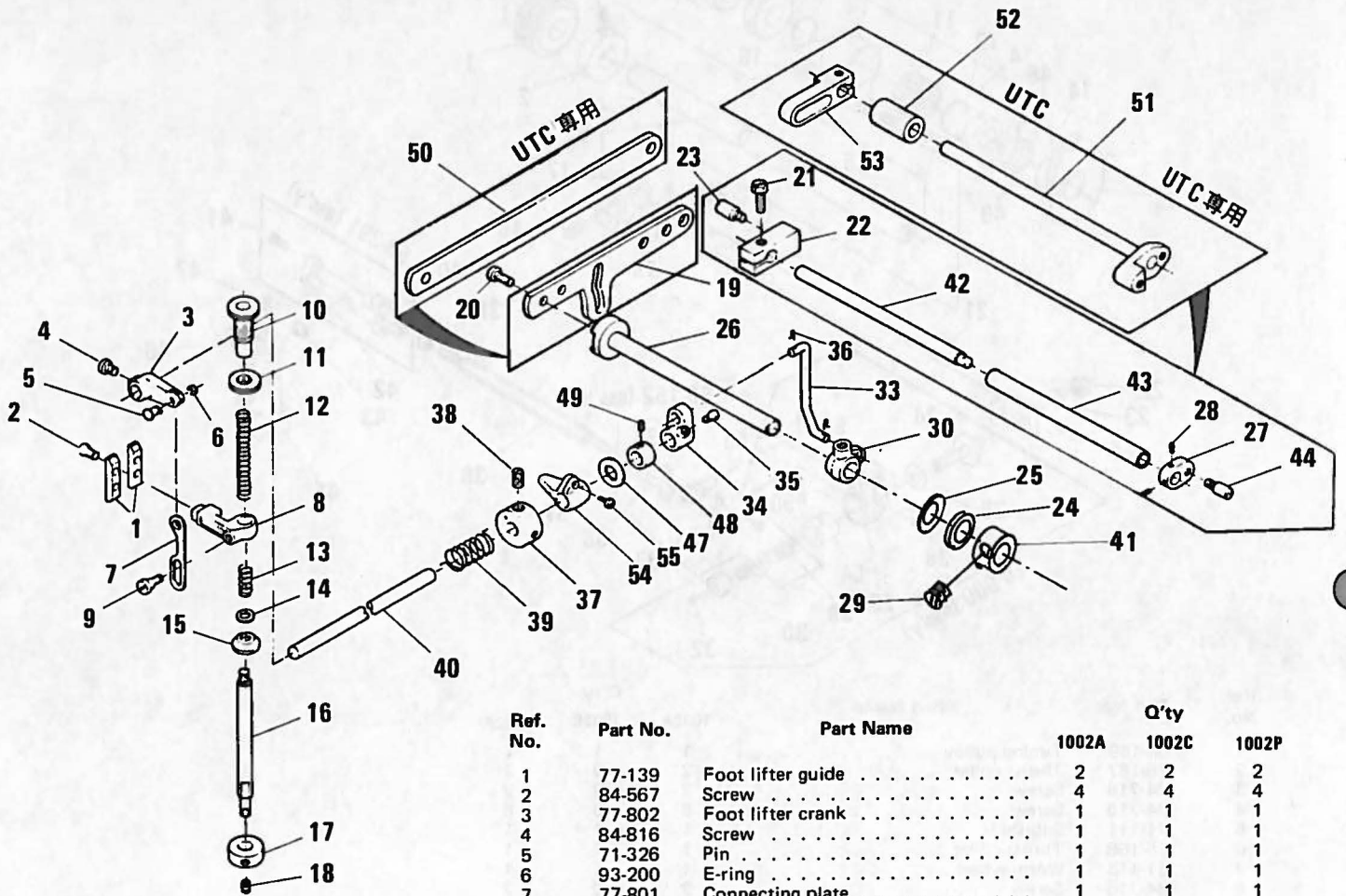
Ref. No.	Part No.	Part Name	Q'ty		
			1002A	1002C	1002P
1	63-101	Feed rocker eccentric link	1	1	1
2	84-711	Screw	1	1	1
3	61-102	Feed eccentric	1	1	1
4	71-431	Link pin	1	1	1
5	23-341	Felt	1	1	1
6	84-612	Screw	1	1	1
7	67-101	Feed lever	1	1	1
8	71-110	Feed rocker arm shaft	1	1	1
9	51-104	Differential feed rocker	1	1	1
10	84-718	Screw	2	2	2
11	93-261	Snap ring	1	1	1
12	75-372	Washer	1	1	1
13	75-169	Collar	1	1	1
14	84-412	Screw	2	2	2
15	55-104	Feed dog mounting plate	1	1	1
16	55-105	Main differential feed	1	1	1
17	84-564	Screw	2	2	2
18	71-105	Shaft	1	1	1
19	71-104	Feed rocking adjusting post	1	1	1
20	91-101	Needle bearing	2	2	2
21	66-101	Feed rocker link	1	1	1
22	75-166	Collar	1	1	1
23	84-715	Screw	2	2	2
24	91-705	Needle bearing	1	1	1
25	86-412	Nut	1	1	1
26	75-453	Washer	1	1	1
27	55-102	Collar	1	1	1
28	85-624	Screw	1	1	1
29	55-101	Feed adjusting bar	1	1	1
30	84-160	Feed adjusting screw	1	1	1
31	84-161	Screw	2	2	2
32	55-106	Stud cap	1	1	1
33	55-103	Feed rocker adjusting holder	1	1	1
34	84-718	Screw	2	2	2
35	84-611	Screw	1	1	1

10 LOOPER



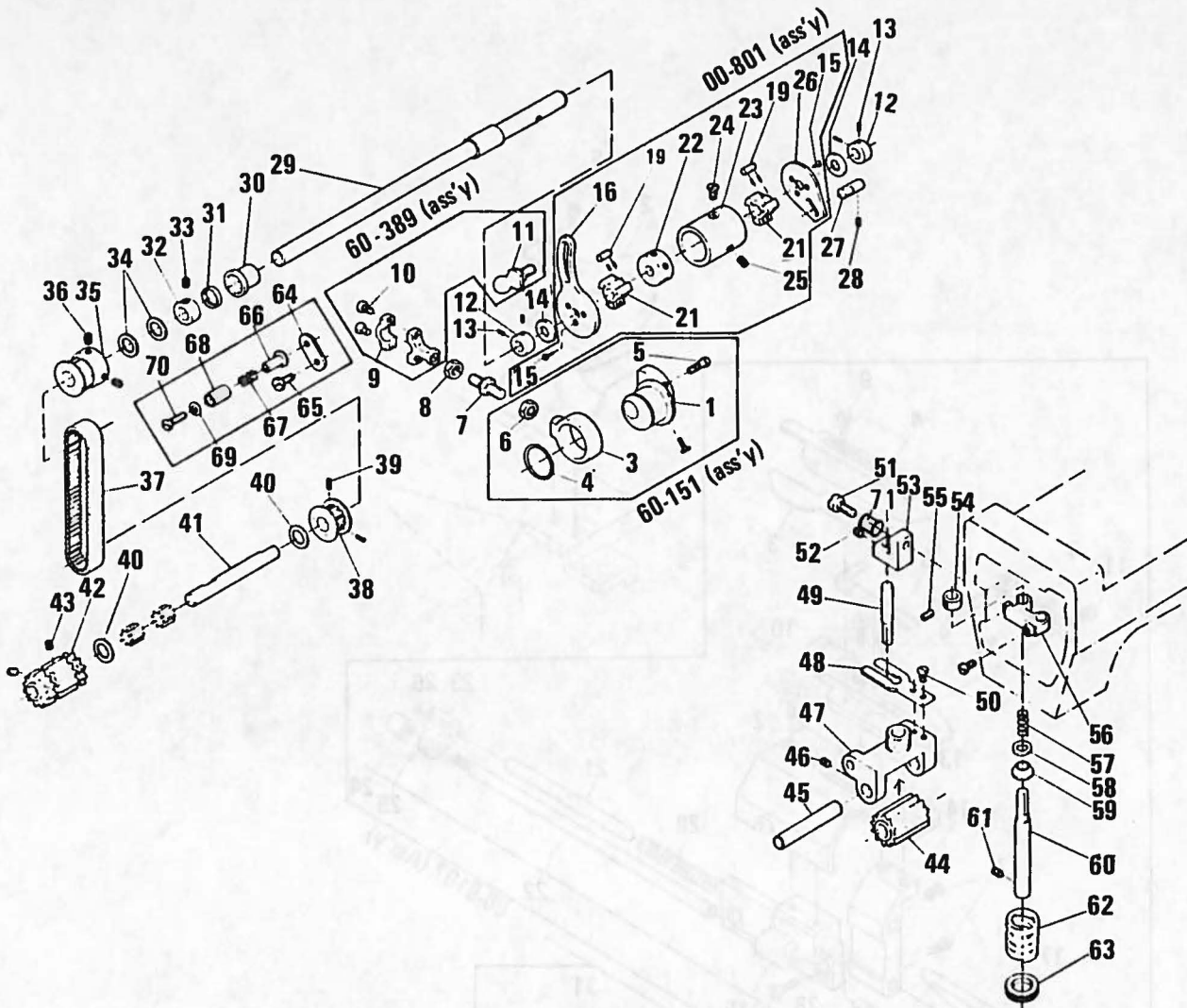
Ref. No.	Part No.	Part Name	Q'ty		
			1002A	1002C	1002P
1	06-159	Timing pulley	1	1	1
2	75-167	Thrust collar	2	2	2
3	84-718	Screw	2	2	2
4	84-715	Screw	8	8	8
5	71-111	Sub-shaft	1	1	1
6	75-168	Thrust collar	1	1	1
7	31-413	Worm wheel	1	1	1
8	84-718	Screw	2	2	2
9	93-406	C-ring	1	1	1
10	63-104	Looper eccentric link	1	1	1
11	91-406	Bearing	1	1	1
12	61-103	Looper avoid eccentric 0.55	1	1	1
13	49-143	Looper thread take-up	1	1	1
14	84-711	Screw	2	2	2
15	71-115	Eccentric link pin	1	1	1
16	86-411	Nut	1	1	1
17	67-102	Looper avoid lever	1	1	1
18	85-113	Screw	1	1	1
19	75-169	Thrust collar	1	1	1
20	84-412	Screw	2	2	2
21	71-112	Looper shaft	1	1	1
22	86-411	Nut	1	1	1
23	75-458	Washer	1	1	1
24	71-114	Looper table bearing shaft	1	1	1
25	75-170	Thrust washer	1	1	1
26	19-132	Looper table	1	1	1
27	84-616	Screw	1	1	1
28	84-718	Screw	1	1	1
29	91-105	Needle gauge	30	30	30
30	75-172	Thrust collar	1	1	1
32					
33	84-314	Screw	2	2	2
34	61-101	Connecting ball (left)	1	1	1
35	84-172	Screw	2	2	2
36	63-103	Connecting rod (left)	1	1	1
37	86-412	Nut	1	1	1
38	65-101	Connecting bar	1	1	1
39	86-411	Nut	1	1	1
40	63-811	Connecting rod (right)	1	1	1
41	84-572	Screw	2	2	2
42	61-513	Connecting ball (right)	1	1	1
43	75-401	Eccentric guide fork	1	1	1
45	67-100	Looper driving lever	1	1	1
46					
47	84-718	Screw	1	1	1
48	84-511	Screw	2	2	2
49	75-174	Collar	1	1	1
50	75-171	Thrust washer	1	1	1
51	39-114	Looper table felt cover	1	1	1
52	23-341	Felt	1	1	1
53	84-162	Screw	1	1	1
54	81-130	Looper table bushing	1	1	1

11 FOOT LIFTER COMPONENTS



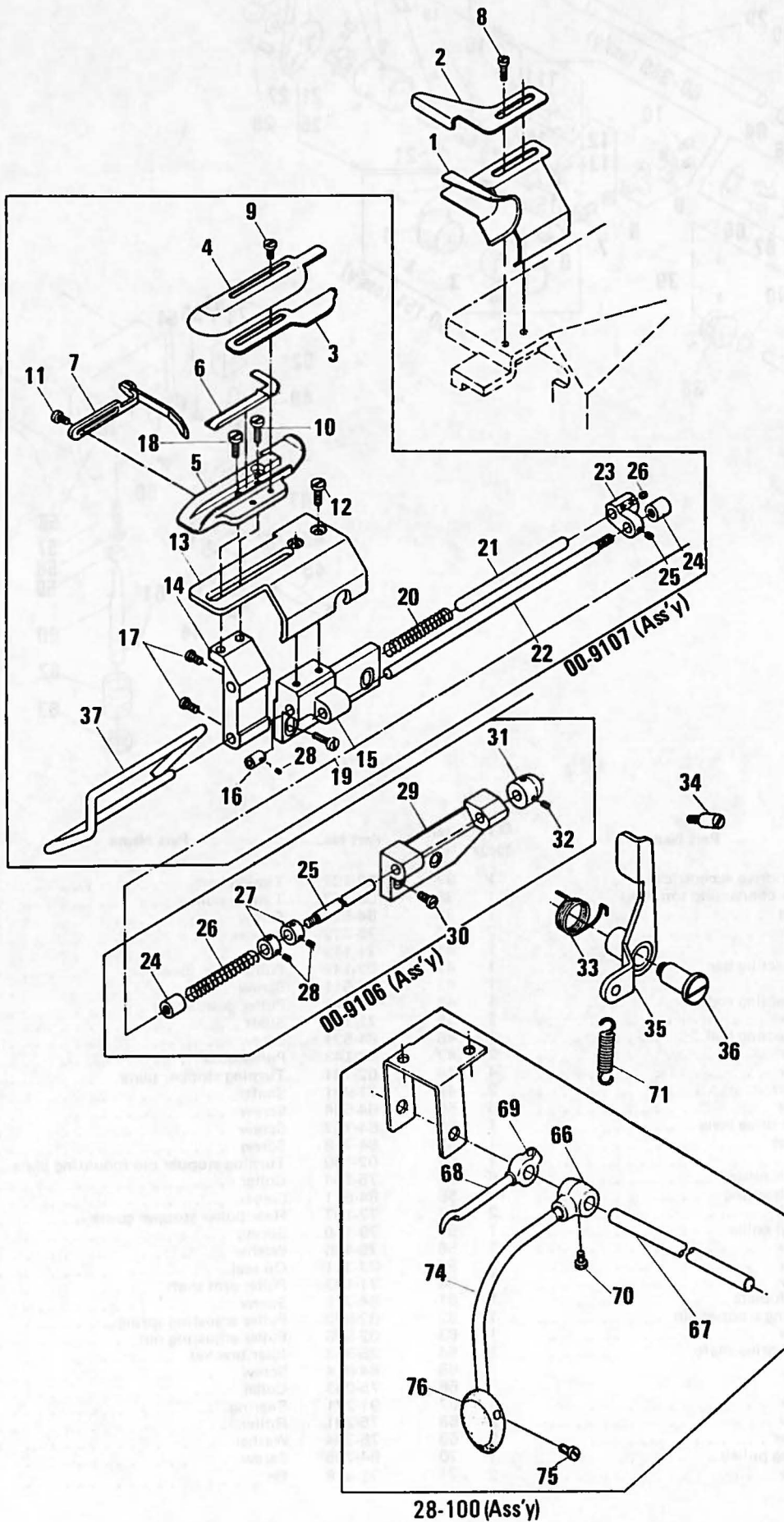
Ref. No.	Part No.	Part Name	Q'ty		
			1002A	1002C	1002P
1	77-139	Foot lifter guide	2	2	2
2	84-567	Screw	4	4	4
3	77-802	Foot lifter crank	1	1	1
4	84-816	Screw	1	1	1
5	71-326	Pin	1	1	1
6	93-200	E-ring	1	1	1
7	77-801	Connecting plate	1	1	1
8	77-803	Presser bar connecting guide	1	1	1
9	84-817	Screw	1	1	1
10	85-801	Presser bar screw	1	1	1
11	86-851	Nut	1	1	1
12	79-123	Spring	1	1	1
13	79-140	Spring	1	1	1
14	75-436	Washer	1	1	1
15	23-311	Seal	1	1	1
16	71-543	Presser bar shaft	1	1	1
17	75-154	Collar	1	1	1
18	84-511	Screw	1	1	1
19	77-811	Control lever	1	1	1
20	84-566	Screw	1	1	1
21	84-812	Screw	1	1	1
22	77-103	Support	1	1	1
23	84-561	Screw	1	1	1
24	75-327	Washer	1	1	1
25	94-802	Oil seal	1	1	1
26	77-124	Foot lifter crankshaft	1	1	1
27	77-101	Foot lifter connecting plate	1	1	1
28	84-512	Screw	2	2	2
29	84-563	Screw	1	1	1
30	77-806	Lever A	1	1	1
31	85-816	Screw	1	1	1
32	93-722	Split pin	1	1	1
33	77-808	Connecting rod	1	1	1
34	77-807	Lever B	1	1	1
35	84-718	Screw	2	2	2
36	93-621	Pin	1	1	1
37	77-809	Spring set collar	1	1	1
38	85-113	Screw	2	2	2
39	79-225	Spring	1	1	1
40	71-554	Foot lifter shaft	1	1	1
41	75-130	Collar	1	1	1
42	77-111	Foot lifter crankshaft B	1	1	1
43	77-121	Foot lifter crank pipe	1	1	1
44	84-562	Screw	1	1	1
47	75-451	Washer	1	1	1
48	75-154	Collar	1	1	1
49	84-511	Screw	1	1	1
50	09-172	Control lever	—	—	—
51	06-623	Tension release cam	—	—	—
52	75-103	Collar	—	—	—
53	06-622	Tension release lever	—	—	—
54	77-804	Stopper	—	—	—
55	84-814	Screw	—	—	—

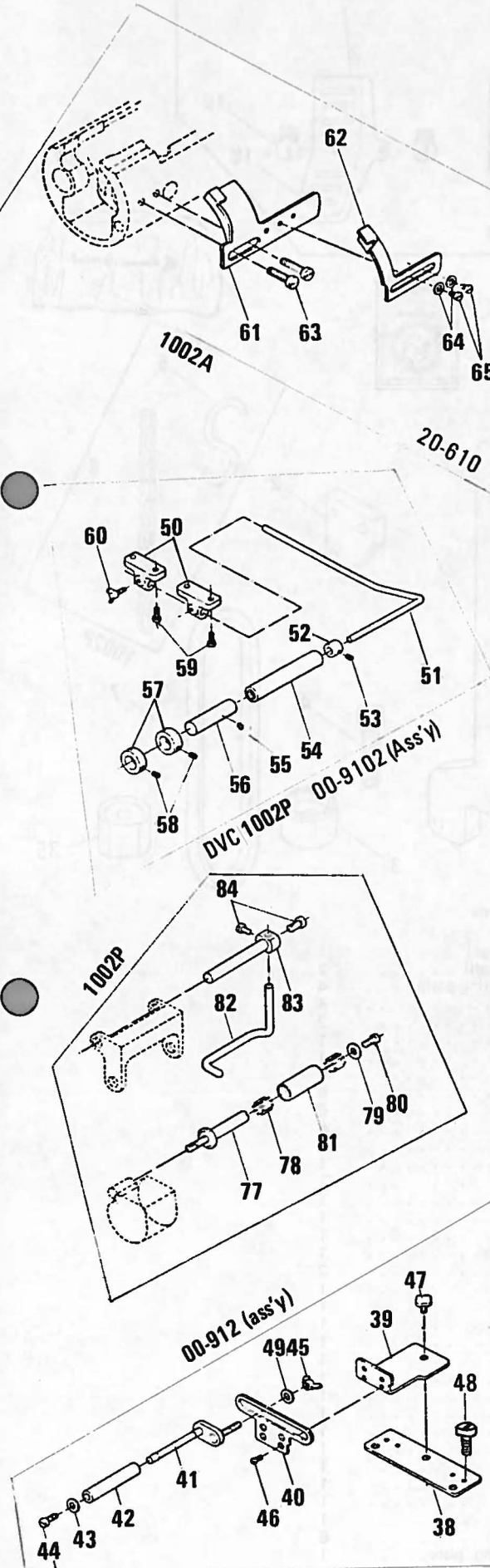
12 PULLER



Ref. No.	Part No.	Part Name	Q'ty 1002P	Ref. No.	Part No.	Part Name	Q'ty 1002P
1	61-201	Puller drive eccentric	1	37	58-102	Timing belt	1
3	63-102	Puller connecting top joint	1	38	06-157	Timing pulley	1
4	93-251	C-ring	1	39	84-521	Screw	2
5	84-762	Screw	2	40	75-372	Washer	2
6	86-411	Nut	1	41	71-113	Shaft	1
7	65-402	Connecting bar	1	42	02-148	Puller gear, lower	1
8	86-412	Nut	1	43	84-511	Screw	2
9	63-812	Connecting rod	1	44	02-541	Puller gear, upper	1
10	84-572	Screw	2	45	71-102	Shaft	1
11	61-817	Connecting ball	1	46	84-521	Screw	2
12	75-152	Collar	2	47	02-143	Puller base	1
13	84-511	Screw	4	48	02-141	Turning stopper plate	1
14	75-451	Washer	2	49	71-921	Shaft	1
15	84-162	Screw	6	50	84-564	Screw	2
16	02-147	Puller drive lever	1	51	84-762	Screw	1
17	75-522	Washer	1	52	84-718	Screw	1
18	86-313	Nut	1	53	02-140	Turning stopper pin mounting plate	1
19	71-466	Clutch roller	6	54	75-154	Collar	1
20	79-191	Clutch spring	12	55	84-511	Screw	2
21	02-101	Clutch	2	56	77-157	Rear puller stopper guide	1
22	02-149	Thrust collar	1	57	79-140	Spring	1
23	01-704	Sleeve	1	58	75-436	Washer	1
24	84-462	Screw	3	59	23-311	Oil seal	1
25	84-719	Screw	1	60	71-103	Puller arm shaft	1
26	02-146	Clutch plate	1	61	84-719	Screw	1
27	02-145	Turning stopper pin	1	62	02-572	Puller adjusting spring	1
28	84-715	Screw	1	63	02-526	Puller adjusting nut	1
29	71-101	Puller drive shaft	1	64	25-303	Idler bracket	1
30				65	84-814	Screw	1
31				66	75-243	Collar	1
32	75-132	Collar	1	67	91-271	Bearing	1
33	84-718	Screw	2	68	75-201	Roller	1
34	75-372	Washer	2	69	75-384	Washer	1
35	06-156	Timing pulley	1	70	84-765	Screw	1
36	84-521	Screw	2	71	71-448	Pin	1

13 ELASTIC GUIDE (WITH PULLER)



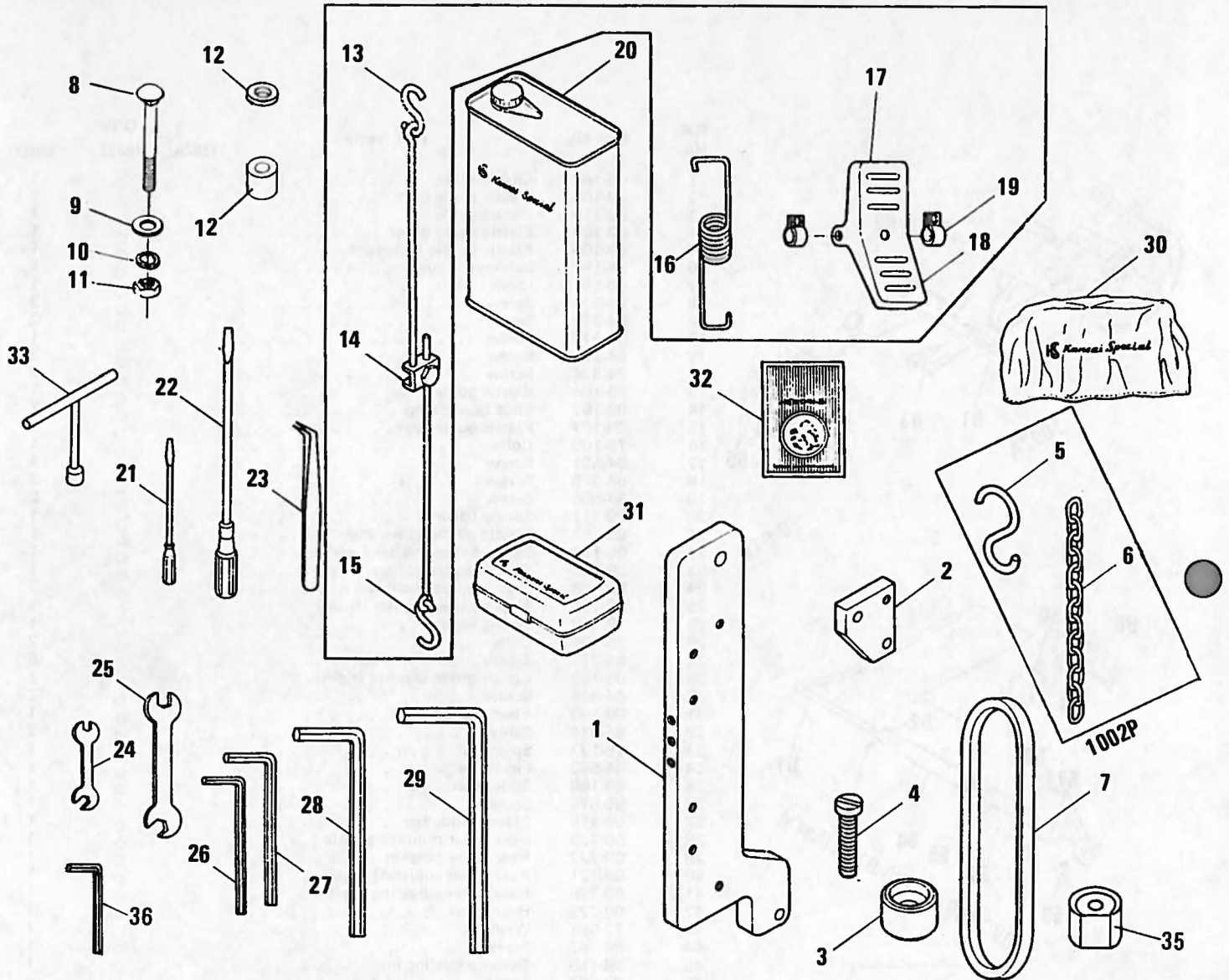


Ref. No.	Part No.	Part Name	Q'ty		
			1002A	1002C	1002P
1	09-163	Cloth holder		0	1
2	09-156	Elastic guide ruler		0	1
3	09-152	Elastic guide		0	1
4	09-169	Elastic guide cover		0	1
5	09-165	Elastic holder slide base		0	1
6	09-157	Sub elastic guide		0	1
7	09-151	Cloth ruler		0	1
8	84-571	Screw		0	2
9	84-370	Screw		0	2
10	84-379	Screw		0	1
11	84-374	Screw		0	2
12	84-574	Screw		0	2
13	09-164	Elastic guide		0	1
14	09-162	Slide base clamp		0	1
15	09-167	Elastic guide base		0	1
16	75-105	Collar		0	1
17	84-521	Screw		0	4
18	84-575	Screw		0	2
19	84-566	Screw		0	2
20	79-111	Spring (strong)		0	1
21	09-153	Elastic guide return shaft		0	1
22	09-154	Slide connecting bar (rear)		0	1
23	09-160	Return spring clamp		0	1
24	09-158	Elastic guide pushing pin		0	2
25	09-155	Slide connecting bar (front)		0	1
26	79-112	Spring (weak)		0	1
27	75-105	Collar		0	2
28	84-314	Screw		0	6
29	09-168	Elastic guide bracket (right)		0	1
30	84-566	Screw		0	2
31	09-159	Elastic guide push		0	1
32	84-314	Screw		0	2
33	79-127	Spring		0	1
34	84-562	Pin screw		0	1
35	09-166	Slide lever		0	1
36	85-674	Screw		0	1
37	09-176	Elastic guide bar		0	1
38	09-723	Rear roller mounting plate		0	1
39	09-722	Rear roller bracket		0	1
40	09-721	Rear roller adjusting plate		0	1
41	09-726	Rear roller adjusting shaft		0	1
42	09-725	Rear roller		0	1
43	75-551	Washer		0	1
44	84-762	Screw		0	1
45	88-155	Roller adjusting nut		0	1
46	84-664	Screw		0	4
47	87-165	Roller mounting bolt		0	1
48	87-901	Wood screw		0	3
49	75-456	Washer		0	1
50	09-142	Roller bracket		0	2
51	09-141	Roller bracket bar		0	1
52	09-145	Collar (small)		0	1
53	84-521	Screw		0	1
54	09-144	Roller (middle)		0	1
55	84-521	Screw		0	1
56	09-143	Collar (large)		0	1
57	09-147	Collar		0	2
58	84-511	Screw		0	2
59	84-567	Screw		0	4
60	09-146	Screw		0	2
61	26-104	Guide for A (2)	0	0	1
62	26-103	Guide for A (1)	0	0	1
63	85-181	Screw		0	2
64	75-468	Washer		0	2
65	84-163	Screw		0	2
66	28-913	Knee control bracket		0	1
67	06-185	Shaft		0	1
68	09-175	Stopper arm		0	1
69	28-915	Stopper		0	1
70	87-671	Screw		0	1
71	28-920	Chain		0	1
72	09-173	Knee controller mounting plate		0	1
73	87-901	Wood screw		0	2
74	28-912	Knee control bar		0	1
75	87-671	Screw		0	1
76	28-911	Knee controller		0	1
77	71-117	Elastic guide roller shaft		0	1
78	91-111	Bearing		0	2
79	75-458	Washer		0	1
80	84-368	Screw		0	1
81	09-174	Tension roller D		0	1
82	09-101	Puller elastic guide		0	1
83	02-142	Elastic guide stopper		0	1
84	84-616	Screw		0	2

14 ACCESSORIES AND THREAD STANDS

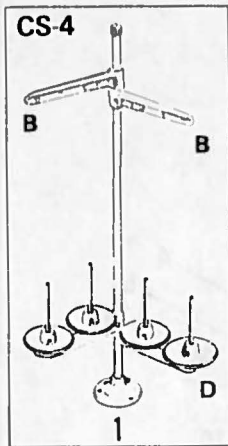
14-1 Accessories

Without UTC thread cutter

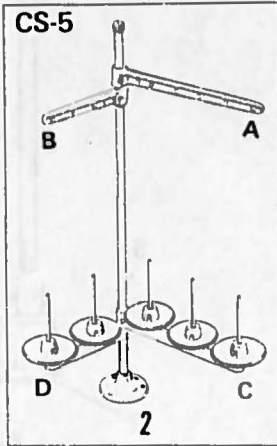


Ref. No.	Part No.	Part Name	
1	25-126	Mounting bracket (large)	1
2	25-125	Mounting bracket (small)	2
3	25-127	Cushion rubber mounting plate	4
4	84-764	Screw	4
5	77-006	S-shaped tube	2
6	28-920	Chain	1
7	59-136	M-36 V belt	1
8	80-751	Screw	6
9	75-451	Washer	6
10	75-529	Spring washer	6
11	88-176	Nut	6
12	31-161	Cushion rubber	4
13	77-006	S-shaped tube	1
14	77-005	Joint	1
15	77-007	S-shaped tube	1
16	77-003	Spring	1
17	77-004	Coupling	1
18	77-001	Presser foot lifter pedal	1
19	77-002	Stopper	2
20	28-611	Oil Tellesto 33	1
21	28-451	Screw driver (small)	1
22	28-452	Screw driver (large)	1
23	28-011	Tweezers	1
24	28-421	Spanner (small)	1
25	28-422	Spanner (large)	1
26	28-311	Wrench A 2mm	1
27	28-312	Wrench B 2.5 mm	1
28	28-313	Wrench C 3 mm	1
29	28-314	Wrench D 5 mm	1
30	28-021	Machine cover	1
31	28-001	Accessory box	1
32	13-011	Needle D.V K28 #11	1
33	28-464	T box wrench	1
34	23-122	Rubber A	6
35	25-128	Cushion rubber mounting plate	1
36	28-310	Wrench	1

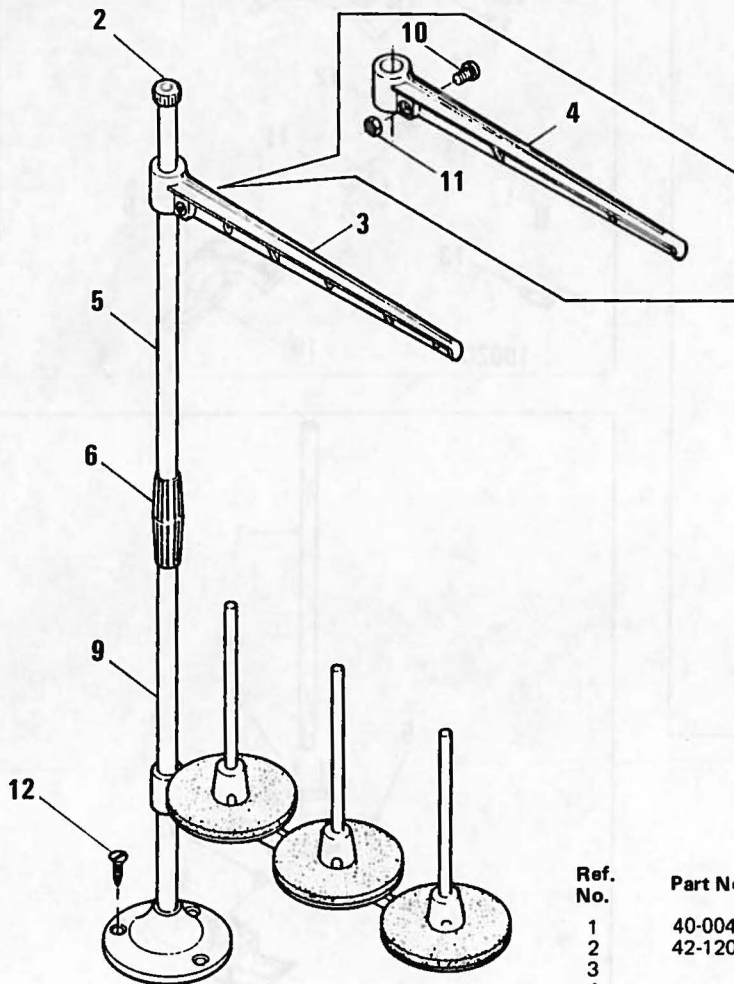
14-2 Thread stands



M1102 M1002
M1003

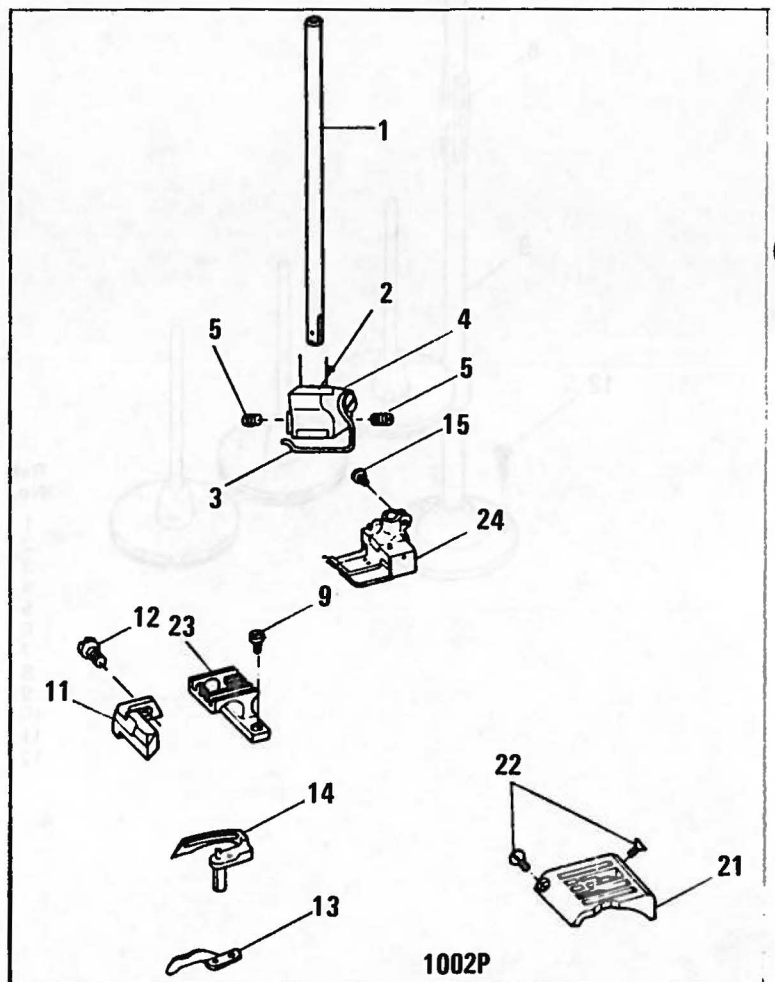
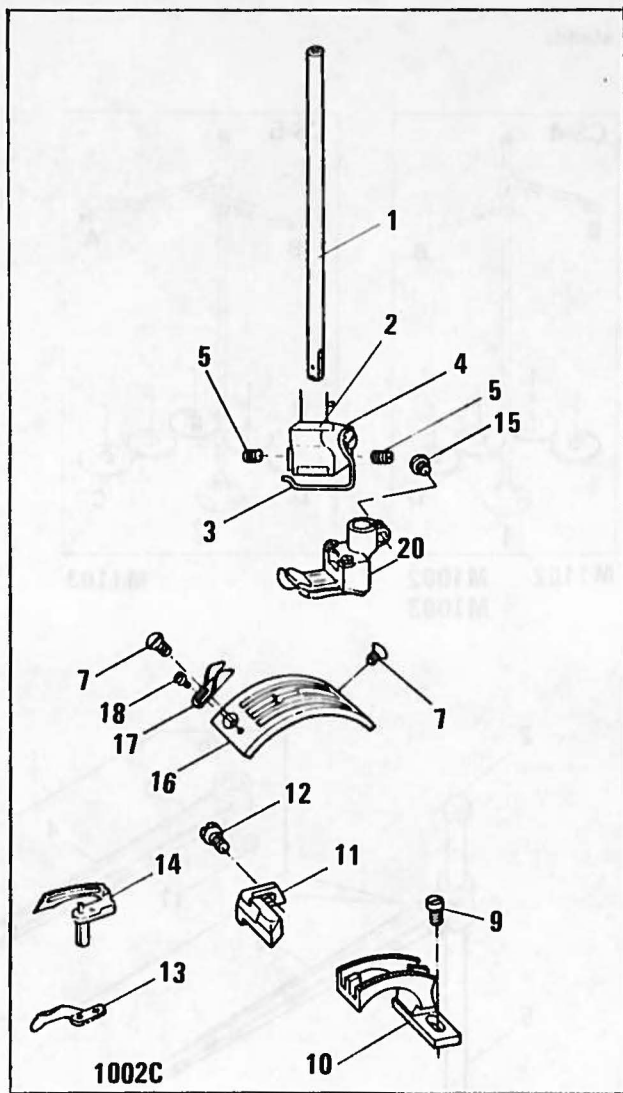
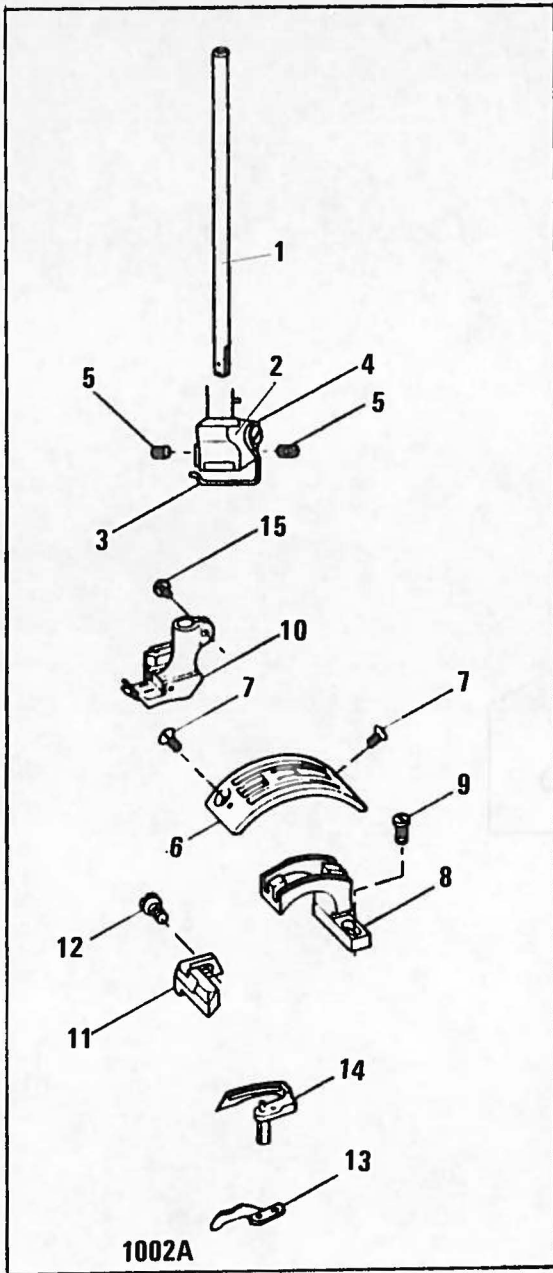


M1103



Ref. No.	Part No.	Part Name	Q'ty
1	40-004	Thread stand (3) CS-4	1 set
2	42-120	Cap	1
3			
4			
5	42-113	Bar (upper)	1
6		Joint	1
7			
8			
9	42-112	Bar (low)	1
10		Screw	2
11		Nut	2
12	42-122	Spool retaining fin	1

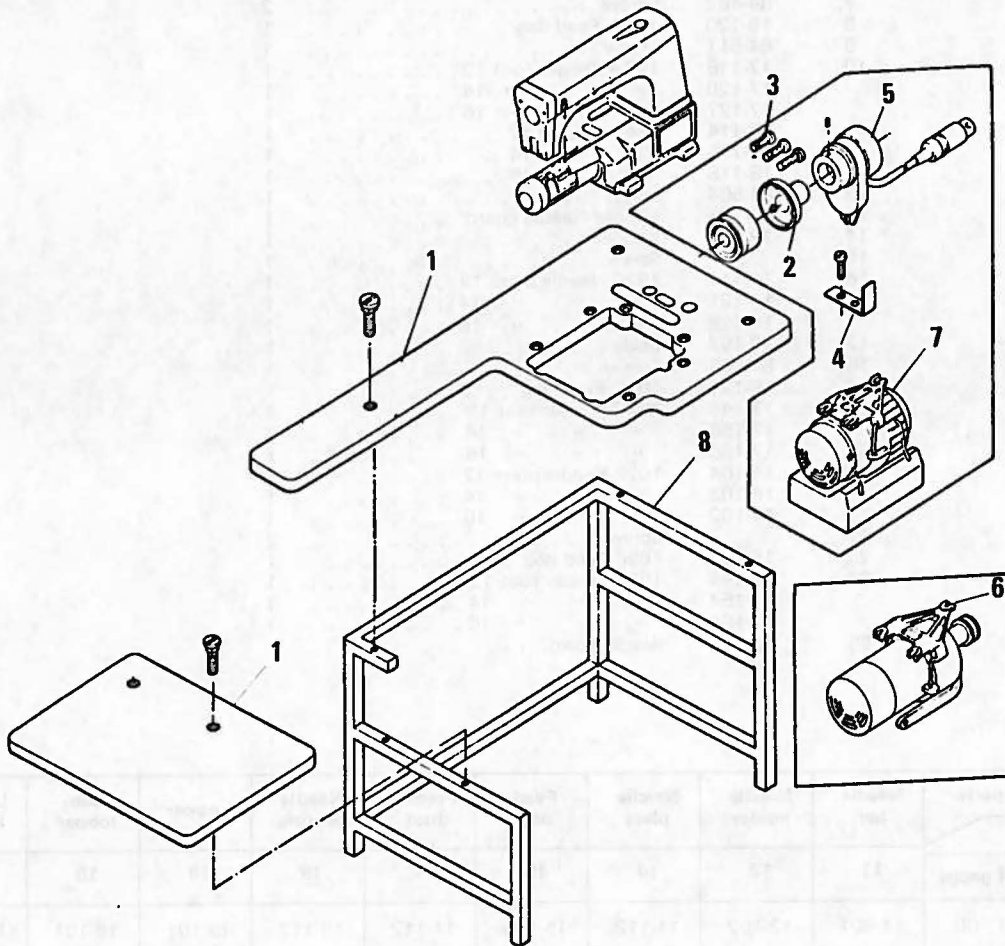
15 DVC-102(NEW) GAUGE LIST



Ref. No.	Part No.	Part Name	Q'ty
1	11-801	Needle bar	1
2	12-103	Needle clamp 12	1
	12-104	" " 14	1
	12-105	" " 16	1
3	45-234	Needle thread guide	1
4	84-263	Screw	1
5	84-314	"	2
6	14-116	102A Needle plate 12	1
	14-120	" " " 14	1
	14-127	" " " 16	1
7	84-462	Screw	2
8	15-120	102A Feed dog	1
9	84-511	Screw	1
10	17-116	102A Presser foot 12	1
	17-120	" " " 14	1
	17-127	" " " 16	1
11	18-114	Needle guard 12	1
	18-115	" " 14	1
	18-116	" " 16	1
12	84-564	Screw	1
13	18-101	Looper Needle guard	1
14	19-101	Looper	1
15		Screw	1
16	14-117	102C Needle plate 12	1
	14-121	" " " 14	1
	14-128	" " " 16	1
17	26-102	Guide	1
18	84-163	Screw	1
19	15-121	102C Feed dog	1
20	17-146	102C Presser foot 12	1
	17-156	" " " 14	1
	17-166	" " " 16	1
21	14-104	102P Needle plate 12	1
	14-103	" " " 14	1
	14-102	" " " 16	1
22		Screw	2
23	15-102	102P Feed dog	1
24	17-144	102P Presser foot 12	1
	17-154	" " " 14	1
	17-164	" " " 16	1
25	18-117	Needle guard	1

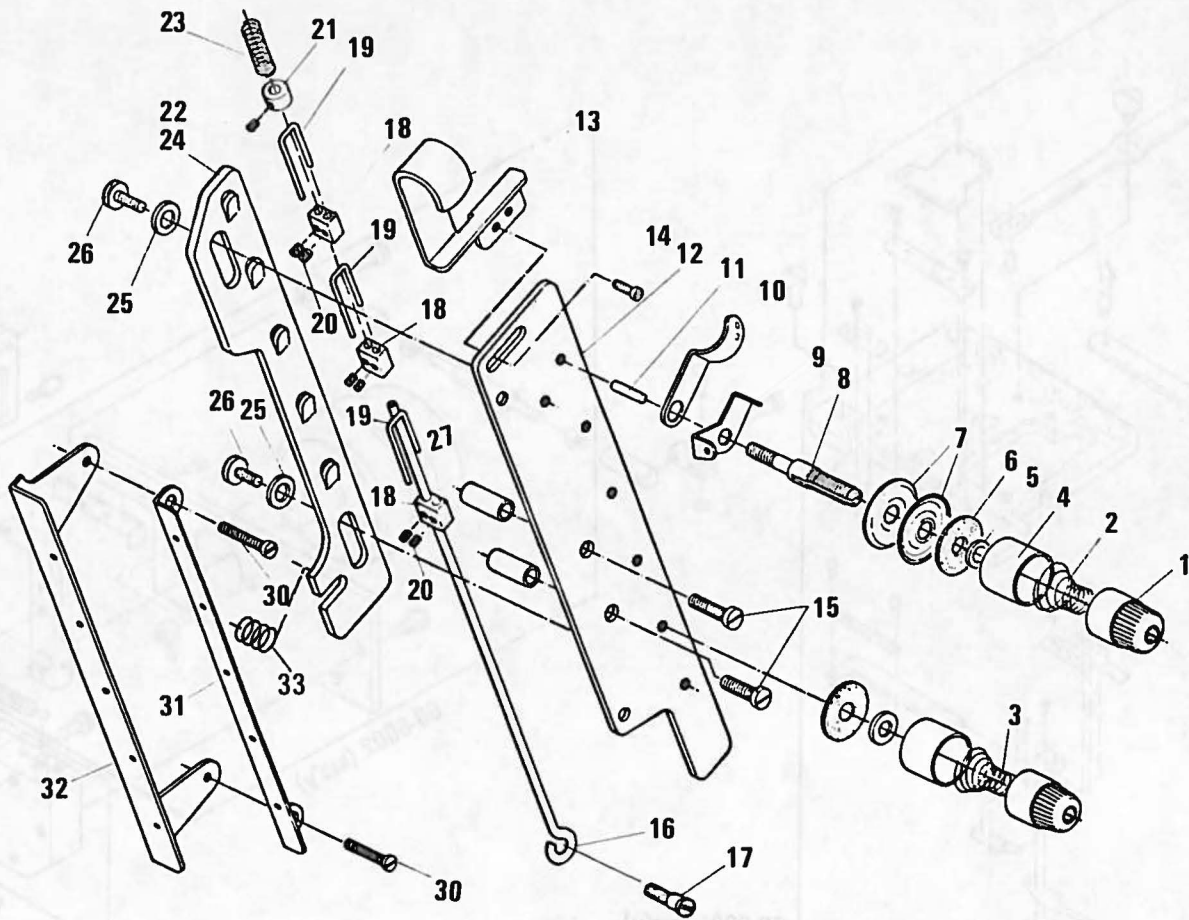
Model	Gauge parts	Needle bar	Needle holder	Needle plate	Feed dog	Presser foot	Needle pearing	Looper	Sub looper	Looper holder
	No.									
	Width of gauge	11	12	14	15	17	18	19	18	19
1002A 1002A/UTC	1/8" (8)	11-801	12-102	14-112	15-120	17-112	18-112	19-101	18-101	19-132
	3/16"(12)	"	12-103	14-116	"	17-116	18-114	"	"	"
	7/32"(14)	"	12-104	14-120	"	17-120	18-115	"	"	"
	1/4" (16)	"	12-105	14-127	"	17-127	18-116	"	"	"
1002C 1002C/UTC	3/16"(12)	11-801	12-103	14-117	12-121	17-146	18-114	19-101	18-101	19-132
	7/32"(14)	"	12-104	14-121	"	17-156	18-115	"	"	"
	1/4"(16)	"	12-105	14-128	"	17-166	18-116	"	"	"
1002P 1002P/UTC	1/8" (8)	11-801	12-102	14-108	15-102	17-124	18-112	19-101	18-101	19-132
	3/16"(12)	"	12-103	14-104	"	17-144	18-114	"	"	"
	7/32"(14)	"	12-104	14-103	"	17-154	18-115	"	"	"
	1/4"(16)	"	12-105	14-102	"	17-164	18-116	"	"	"

16. TABLE MOTOR



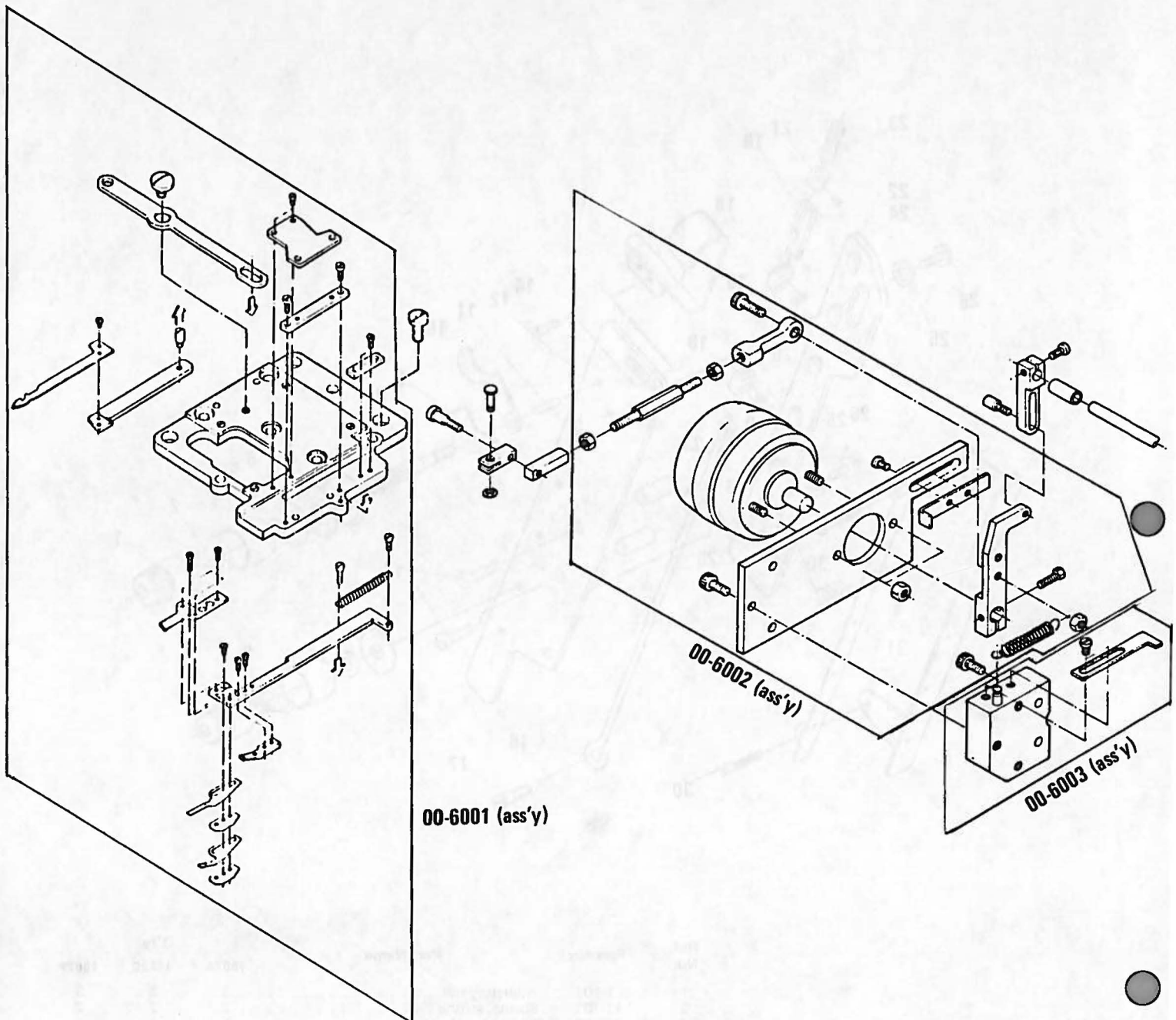
Ref. No.	Part No.	Part Name	Q'ty			
			1002A	1002C	1002P	UTC
1	21-002	Top plate	1	1	1	1
2	06-112	Adapter				1
3	87-145	Screw	3	3	3	3
4	06-628	Turning stopper plate				1
5		Encoder				1
6		Clutch motor	1	1	1	
7	06-901	UTC motor				1
8	28-805	Table stud	1	1	1	

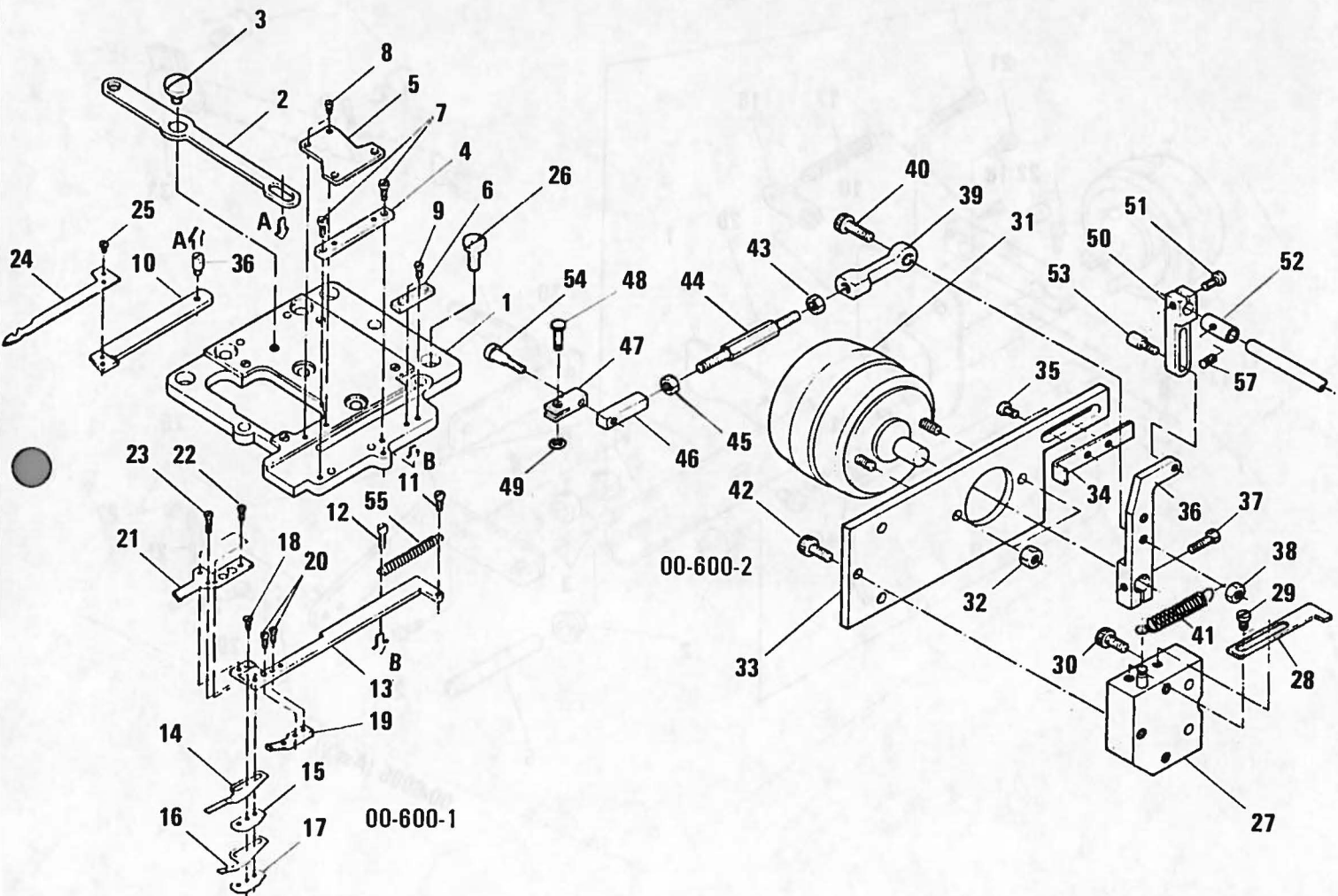
17. THREAD TENSION ADJUSTER (UTC)



Ref. No.	Part No.	Part Name	Q'ty		
			1002A	1002C	1002P
1	41-101	Adjusting nut	3	3	3
2	41-701	Spring, strong	2	2	2
3	41-702	Spring, weak	1	1	1
4	41-107	Disc cover	3	3	3
5	33-802	Tension disc washer	3	3	3
6	23-324	Felt	3	3	3
7	41-111	Disc	6	6	6
8	41-175	Tension post	3	3	3
9	41-115	Thread eyelet	3	3	3
10	41-117	Thread eyelet	3	3	3
11	06-944	Thread release pin	3	3	3
12	41-729	Tension post holder	1	1	1
13	06-948	Thread release post guide	1	1	1
14	84-361	Screw	2	2	2
15	84-765	Screw	2	2	2
16	41-726	Thread release post B	1	1	1
17	84-792	Screw	1	1	1
18	06-067	Hook holder	3	3	3
19	06-071	Hook	3	3	3
20	84-314	Screw	6	6	6
21	75-941	Thread release cushion collar	1	1	1
22	84-314	Screw	1	1	1
23	79-914	Thread release cushion spring	1	1	1
24	41-730	Tension post support	1	1	1
25	75-942	Tension post collar	2	2	2
26	84-559	Tension post slide screw	2	2	2
27	75-943	Tension post collar	2	2	2
30	84-374	Screw	2	2	2
31	41-728	Thread release guide thread eyelet (right)	1	1	1
32	41-727	Thread release guide thread eyelet (left)	1	1	1
33	79-164	Spring	1	1	1

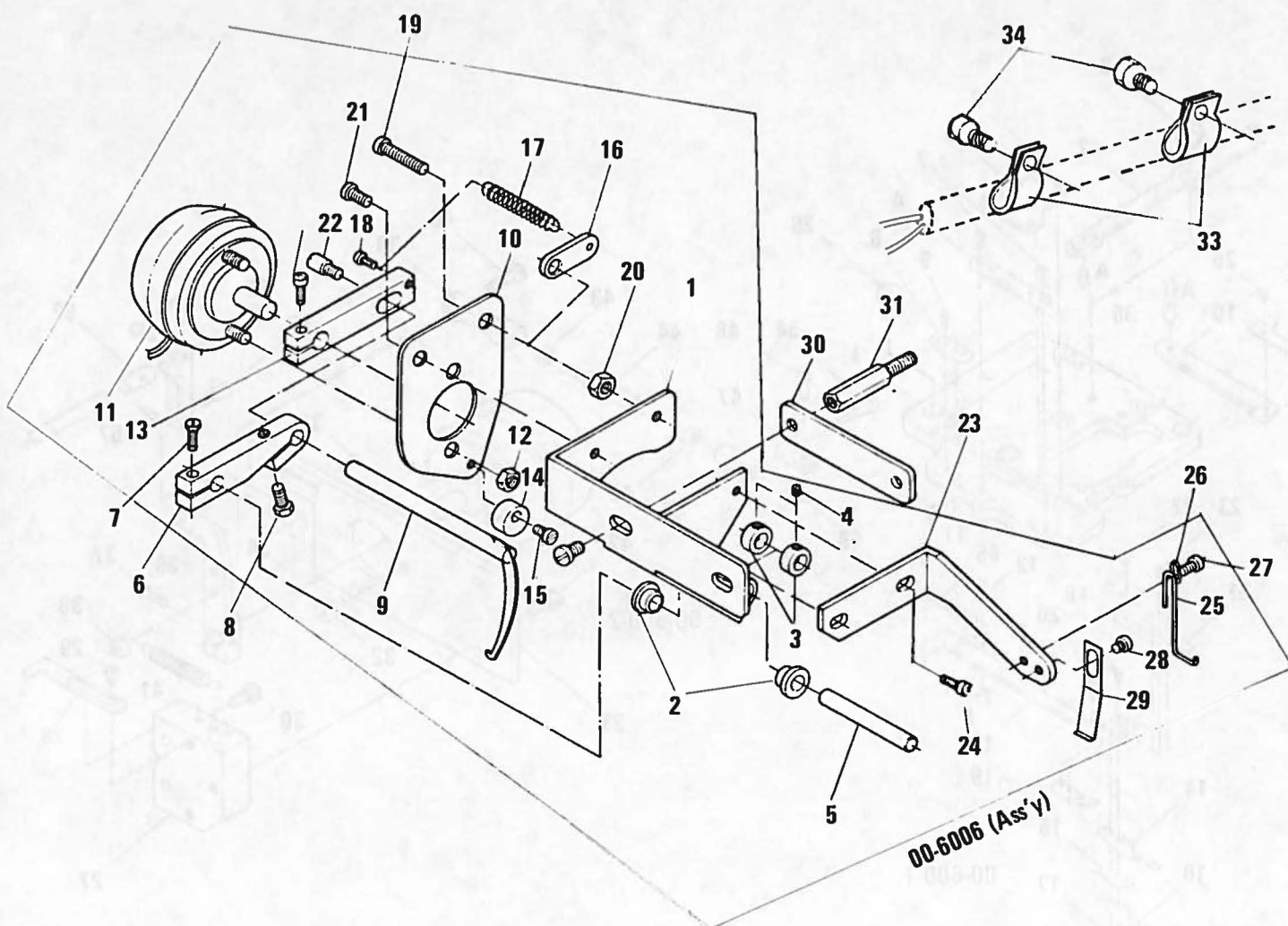
18. THREAD CUTTER KNIFE MECHANISM



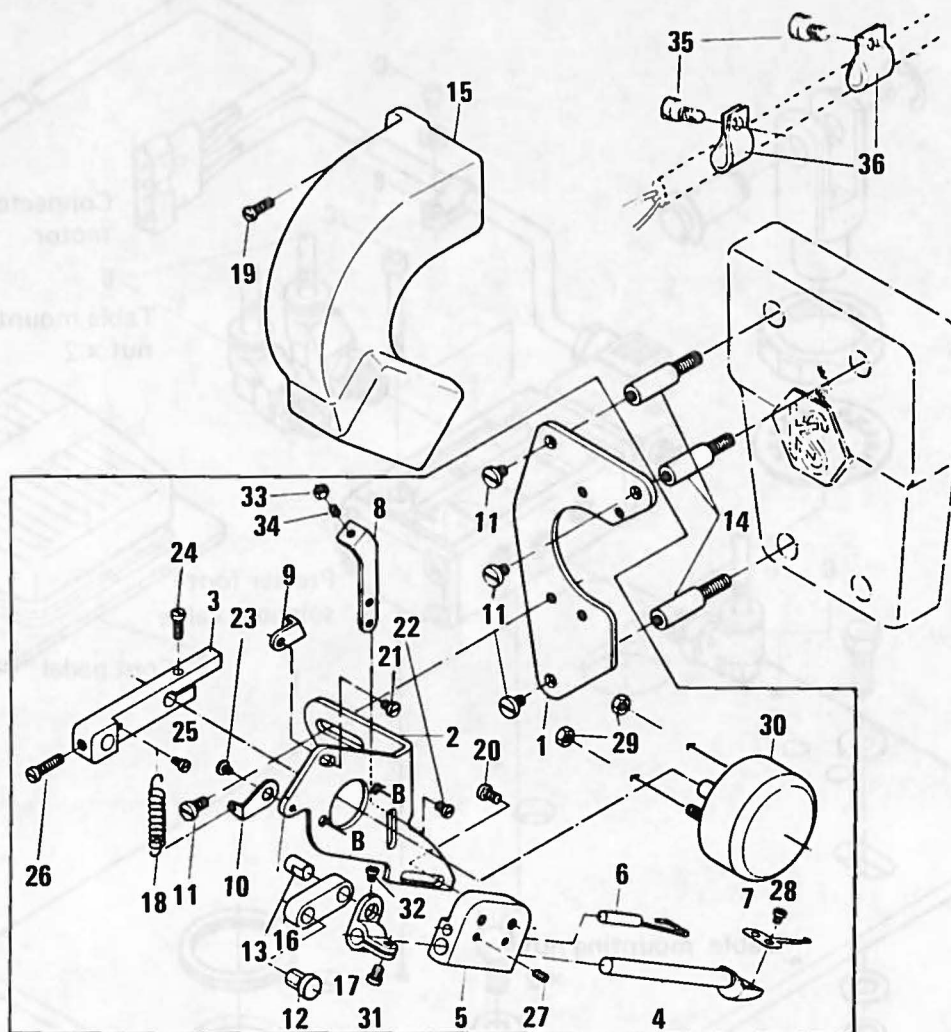


Ref. No.	Part No.	Part Name	Q'ty UTC	Ref. No.	Part No.	Part Name	Q'ty UTC
1	06-621	Base plate	1	30	87-164	Screw	2
2	06-614	Movable knife drive lever	1	31	06-848	Blade solenoid	1
3	84-103	Screw	1	32	88-166	Nut	2
4	06-616	Movable knife plate holder guide	1	33	06-625	Thread cutter solenoid bracket	1
5	06-620	Knife holder cover	1	34	06-624	Thread cutter solenoid stopper (A)	1
6	06-619	Knife plate holder adjusting plate	1	35	84-566	Screw	2
7	84-361	Screw	2	36	06-627	Thread cutter solenoid arm	1
8	84-161	Screw	4	37	84-812	Screw	1
9	84-161	Screw	2	38	88-146	Nut	2
10	06-617	Movable blade base	1	39	06-610	Thread cutter drive rod end	1
11	84-161	Screw	1	40	87-112	Screw	1
12	84-161	Screw	1	41	79-129	Spring	1
13	06-618	Fixed knife base	1	42	87-164	Screw	3
14	06-605	Plate spring (weak)	1	43	88-100	Nut	1
15	06-603	Plate spring liner	1	44	06-609	Thread cutter drive connecting bar	1
16	06-604	Plate spring (strong)	1	45	88-146	Nut	1
17	06-608	Plate spring stopper plate	1	46	06-611	Thread cutter drive connecting rod (A)	1
18	06-601	Blade rear spring stopper plate	2	47	06-612	Thread cutter drive connecting rod (B)	1
19	06-602	Spring adjusting liner	1	48	06-613	Movable knife drive pin	1
20	85-102	M3 x 51 screw	2	49	93-211	φ5 F-ring	1
21	06-607	Fixed	1	50	06-622	Tension release lever	1
22	85-102	M2 x 52 screw	2	51	84-812	Screw	1
23	85-103	M2 x 82 adjusting screw	2	52	75-103	Collar	1
24	06-606	Movable knife	1	53	84-104	Screw	1
25	85-101	Screw	3	54	84-608	Screw	1
26	84-566	Screw	7	55	79-114	Spring	1
27	06-626	Thread cutter solenoid mounting bracket	1	56	84-202	Screw	1
28	06-629	Thread cutter solenoid stopper (B)	1	57	84-511	Screw	1
29	84-566	Screw	2				

19. WIPER (1002A, 1002C)



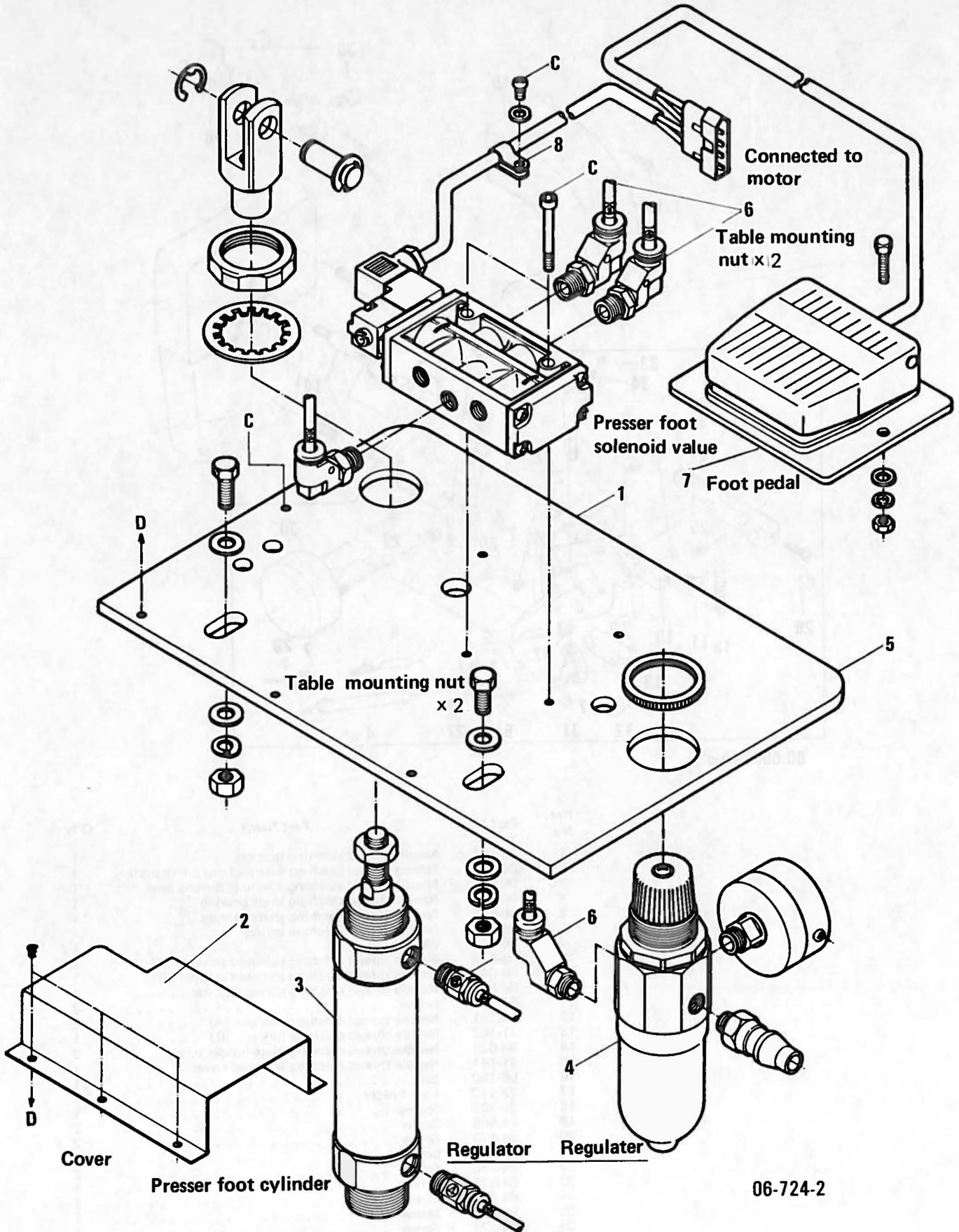
Ref. No.	Part No.	Part Name	
1	06-672	Wiper bracket	1
2	06-682	Bushing	2
3	75-097	Collar	2
4	84-361	Screw	2
5	06-681	Wiper drive shaft	1
6	06-674	Wiper lever	1
7	84-413	Screw	2
8	84-413	Screw	1
9	06-675	Wiper	1
10	06-679	Solenoid bracket	1
11	06-677	Wiper solenoid	1
12	87-145	Nut	2
13	06-680	Solenoid connecting lever	1
14	06-683	Wiper adjusting bracket	1
15	87-138	Screw	1
16	06-684	Wiper spring stopper bracket	1
17	79-703	Spring	1
18	84-161	Screw	1
19	84-566	Screw	1
20	86-311	Nut	1
21	84-564	Screw	1
22	84-706	Screw	1
23	06-671	Thread catching bracket	1
24	84-564	Screw	2
25	06-678	Upper thread catching spring	1
26	75-468	Washer	1
27	84-364	Screw	1
28	06-676	Thread catching spring	1
29	84-364	Screw	1
30	06-673	Wiper bracket space liner	1
31	06-751	Stud bolt	2
32	84-566	Screw	2
33	06-935	Wiper cord guard	4
34	84-564	Screw	4



00-6007 (Ass'y)

Ref. No.	Part No	Part Name	Q'ty
1	06-641	Needle thread catching bracket	1
2	06-642	Needle thread catching solenoid mounting plate	1
3	06-643	Needle thread catching solenoid turning lever	1
4	06-644	Needle thread catching shaft bearing	1
5	06-645	Needle thread catching shaft bearing	1
6	06-646	Needle thread catching spring	1
7	06-647	Wiper	1
8	06-648	Needle thread catching solenoid stopper (A)	1
9	06-649	Needle thread catching solenoid stopper (B)	1
10	06-650	Needle thread catching spring adjuster	1
11	84-567	Screw	3
12	71-161	Needle thread catching link pin (A)	2
13	71-162	Needle thread catching link pin (B)	1
14	84-625	Needle thread catching plate holder screw	3
15	21-141	Needle thread catching solenoid cover	1
16	66-102	Link	1
17	73-113	Link holder	1
18	79-703	Spring	1
19	84-566	Screw	2
20	84-579	Screw	2
21	84-366	Screw	2
22	84-366	Screw	2
23	84-575	Screw	1
24	84-413	Screw	1
25	84-115	Screw	1
26	84-521	Screw	1
27	84-314	Screw	2
28	85-611	Screw	2
29	88-146	Nut	2
30	06-677	Upper solenoid	1
31	84-572	Screw	1
32	84-563	Screw	1
34	06-301	Code	1
35	06-935	Wipet cord guard	4
36	84-564	Screw	4

20 AIR CONTROL DIAGRAM FOOT LIFTER



Ref. No.	Part No.	Part Name	Q'ty			
			1002A	1002C	1002P	UTC
1	06-501	Base plate				1
2	06-550	Cover				1
3	06-551	Foot lifter cylinder (80 mm)				1
4	06-504	Regulator (with meter)				1
5	06-506	Foot lifter solenoid valve				1
6	06-519	L-shaped joint				4
7	06-552	Foot pedal				1
8	06-512	Wire stopper saddle				1

MORIMOTO MFG. CO., LTD.

Megalo Coop Fukushima Bldg. (2F)
10-19, Fukushima 2-Chome, Fukushima-ku,
Osaka 553, Japan
Tel: (06) 451-9127 Telex: 05242193 KSPCAL-J

MAIN FACTORY

180, Suna Shijonawate City, Osaka 575, Japan
Tel: (0720) 78-1177

TOKYO OFFICE

16-7, 5-Chome, Kotobashi, Sumida-ku, Tokyo 130, Japan
Tel: (03) 635-5121

OKAYAMA OFFICE

Bireggi Okuda (1F), 24-19, Okudahonmachi, Okayama 700, Japan
Tel: (0862) 32-9120

AKITA OFFICE

14-8, 6-Chome, Hagijima, Akita 010, Japan
Tel: (0188) 65-5034

KANSAI SPECIAL USA CORPORATION

51 Romeo Street, Moonachie N. J. 07074 U. S. A.
Tel: 201 460 0350 Telex: 23 219449

MORIMOTO MFG. (H.K.) LTD.

C-2 22nd Floor, Pearl City Mansion, Paterson Street, Hong Kong
Tel: 5 77 1631 Telex: 802 83919

MORIMOTO MFG. (S) CO. PTE. LTD.

50 Kallang Bahru, No. 02-18/23 Singapore 1233
Tel: 293 8880 Telex: 87 25138

MORIMOTO MFG. CO. LTD. REPRESENTATIVE OFFICE

Sedan street 22, 4000 Dusseldorf 1 W.Germany
Tel: 371141 Telex: 41 8586555